

Load Cell Central

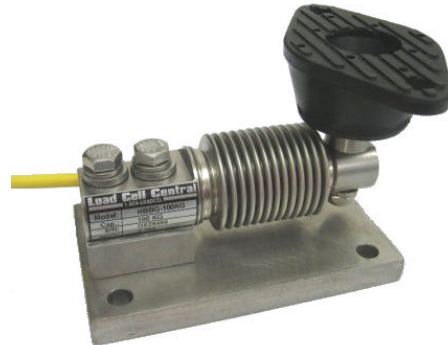
1-800-LOADCEL

Stainless Steel Weighing Assembly

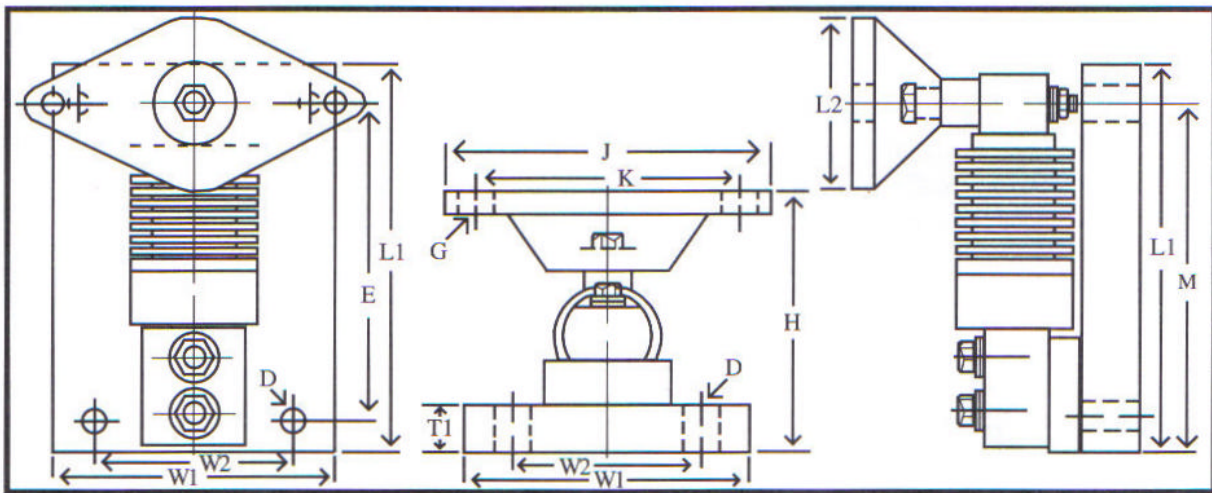
Model: Duramount 25

Ranges from 5 to 500 kg (~11 to 1102 lb)

The Duramount 25 mounting assemblies are low cost and designed for various indoor weighing applications where heavy wash down is anticipated such as in the food and pharmaceutical industries. The neoprene top plate isolates the load cell from shock and vibration. All other hardware is stainless steel. The HBB Series load cells used in the Duramount 25 are stainless steel and hermetically sealed for protection against adverse conditions.



Capacities: 5, 10, 20, 30, 50, 100, 200, 350, 500 KG



Dimensions: (inches)

Capacity (kg)	Capacity (lb)	W1	W2	L1	L2	T1	D	H	E	G	J	K	M
5 - 50	11 - 110	3.0	2.25	5.0	1.75	.50	.35	3.38	4.0	.34	3.12	2.38	4.5
100 - 200	220 - 441	3.0	2.25	5.0	2.37	.50	.35	3.62	4.0	.34	3.87	3.0	4.5
350, 500	771 - 1,102	4.5	3.5	5.0	3.37	.50	.42	4.12	4.0	.56	5.5	4.12	4.5

Load Cell Central
 216 Main St. / PO Box 91
 Monroeton, PA 18832
 Web: www.800loadcel.com

Toll Free: 1-800-562-3235
 Ph: 1-570-265-5015
 Fax: 1-570-265-5148
 Email: sales@800loadcel.com