

# Load Cell Central

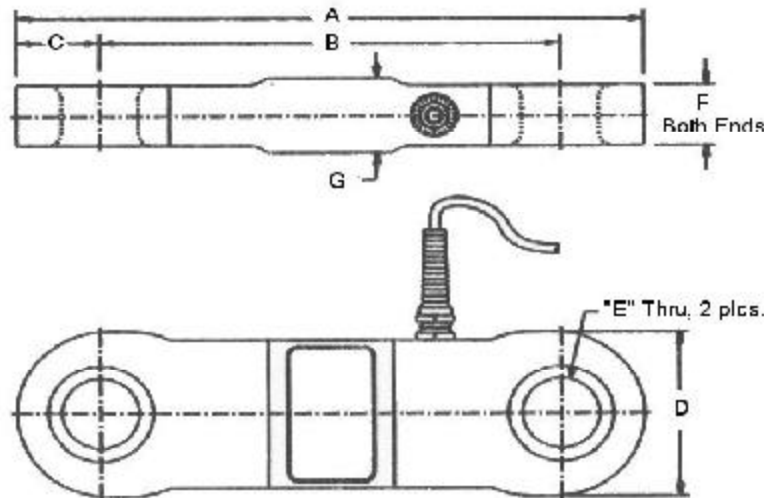
1-800-LOADCEL

## Model: DCL2

### Stainless Steel Tension Link Load Cell

### Crane Load Link

Load Cell Central's DCL2 tension link load cell is one of the most accurate load cells of its type, with a combined error of only 0.05%. The DCL2 is constructed of 17-4 stainless steel, and is environmentally sealed to IP66 to guard against moisture and humidity. Custom capacities, cable lengths, and submersible versions are available. All capacities are typically in stock for quick delivery.



<b>Capacity:</b>	<b>A</b>	<b>B</b>	<b>C</b>	<b>D</b>	<b>E</b>	<b>F</b>	<b>G</b>
10K-25K	11.25	8.25	1.50	3.25	1.50	1.20	1.48
40K-50K	14.33	10.00	2.17	3.25	2.13	1.60	1.92
100K-200K	15.00	10.00	2.50	4.25	2.31	2.38	2.92

#### Standard Capacities

Output	3 mV/V ± 0.008 (* 10K capacity is 2 mV/V nom.)
Combined Error	0.05% of Full Scale
Non-Repeatability	0.02% of Full Scale
Creep (20 minutes)	0.03% of Full Scale
Zero Balance	1.0% of Full Scale
Output Temp. Effect (% Ld/°F)	0.0008
Zero Temp. Effect (% FS/°F)	0.0015
Compensated Temperature Range	14°F to 104°F
Operating Temperature Range	-65°F to +200°F
Bridge Resistance (Ohms)	700 ± 7
Insulation Resistance (Megohms)	5000 @ 50 VDC
Recommended Excitation	10 VDC
Maximum Excitation	15 VDC
Safe Overload	150% F.S.
Safe Sideload	100% F.S.
Ultimate Overload	300% F.S.
Cable Length	25'

#### Wiring Color Code:

RED	+EXCITATION
BLACK	-EXCITATION
GREEN	+SIGNAL
WHITE	-SIGNAL
BARE	SHIELD

Load Cell Central  
P. O. Box 91 / 216 Main St.  
Monroeton, PA 18832  
Toll Free: 1-800-LOADCEL / 1-800-562-3235

Phone: 1-570-265-5015  
Fax: 1-570-265-5148  
Email: salesam@800loadcel.com  
Web: www.800loadcel.com