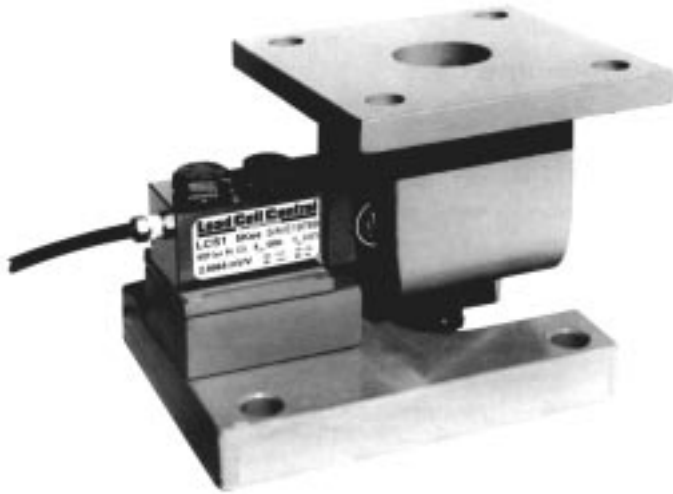


DURAMOUNT 3E™
FOR USE WITH
LCC-LCS1

Load Cell Central

1-800-LOADCEL

- NON RIGID
- ADJUSTABLE HEIGHT



Duramount 3E

FEATURES:

- Capacity of 500 to 10K LB.
- Epoxy paint
- Two axes of freedom
- Easy height adjustment
- Optional stainless steel construction

Description:

The Duramount 3E is one of the most cost-effective weighing assemblies available and comes in capacities of 500, 1K, 2K, 2.5K, 3K, 4K, 5Kse, 5Kle, and 10K. It is designed for all low profile medium capacity applications. The unique center pivoted, tension-loading design tolerates platform movement in all directions and is self-restoring to its center position. Check rods are unnecessary for static loads. If major load movement is anticipated, platform or vessel bumpers may be required. Platform leveling and adjustment can be done easily. The Duramount 3E's simplified design allows it to be bolted directly to the platform and floor without extra plates, buttons, and other mounting devices normally required.

APPLICATIONS:

- Light to heavy capacity
- Food Processing
- Process weighing
- Batching
- Tank weighing
- Platform scale
- Harsh environment
- Conveyor
- Chemical plants
- Filling machine

216 Main St. Monroeton, PA 18832

website: www.800loadcel.com

Load Cell Central
1-800-LOADCEL
1-800-562-3235

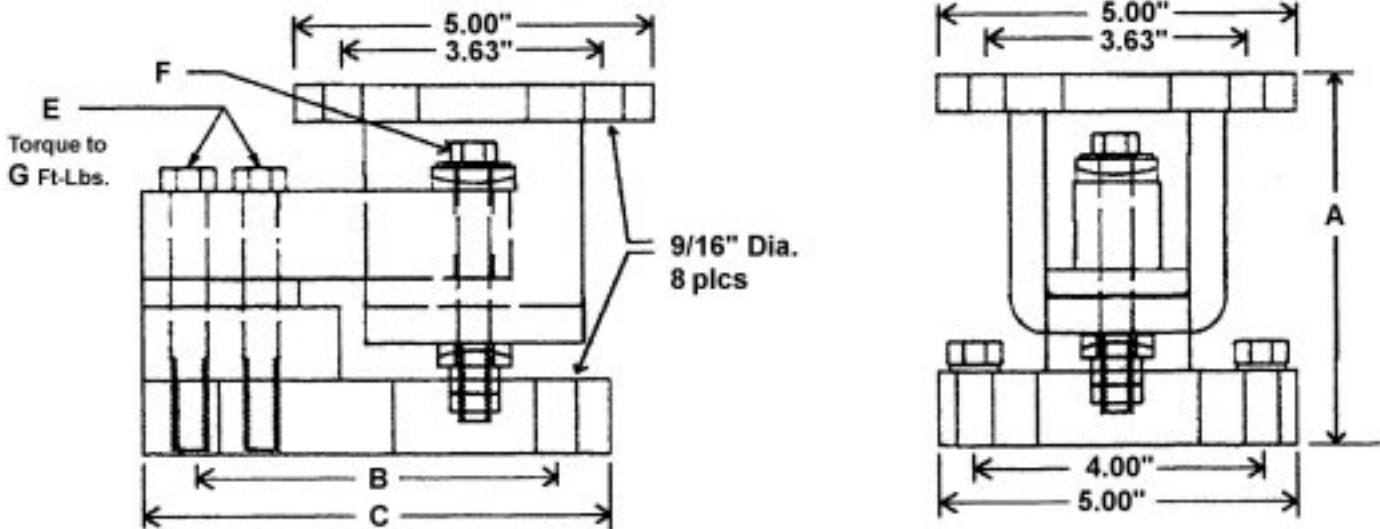
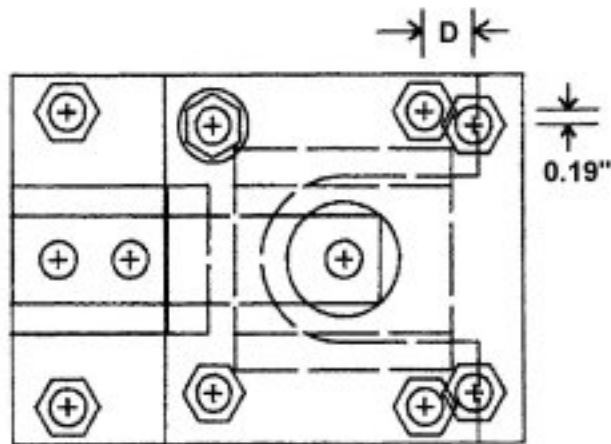
Tel: 570-265-5015 Fax: 570-265-5148

email: sales@800loadcel.com

Load Cell Central

1-800-LOADCEL

DIMENSIONS:



| Capacity | A* | B | C | D | E | F | G |
|-----------------|-----|-----|-----|------|-----------------|------------------|-----|
| 500** thru 5Kse | 5.0 | 5.0 | 6.5 | 0.69 | 1/2-20 x3.5" | 7/16-20 x3.5" | 90 |
| 5Kle / 10K | 5.3 | 6.5 | 8.0 | 0.55 | 3/4-16 x4.0" | 5/8-18 x4.0" | 250 |

*Adjustable +/- .25"

Note: All bolts are Grade 5

** When used with load cell model LCS1-S2-500 lb.