

Load Cell Central

1-800-LOADCEL

Low Profile Shear Web Pancake Load Cell

Model: SWCM

Ranges from 2,500 to 100,000 LB



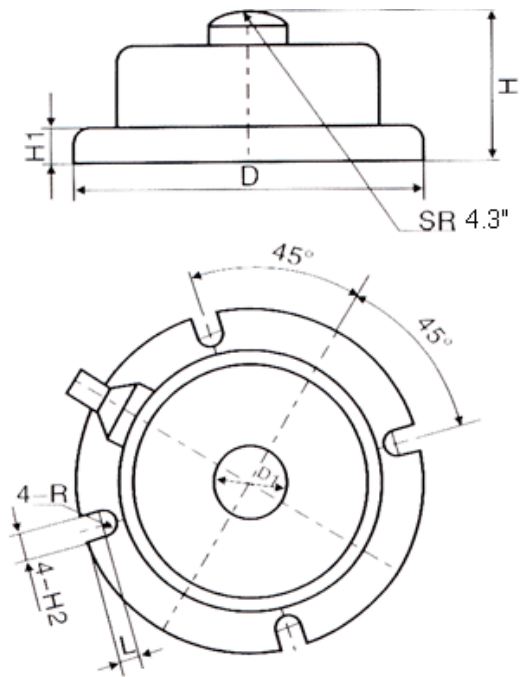
The SWCM load cell is designed for compression loads such as material testing, force calibration of presses, or nearly any force measurement application. The SWCM is constructed of a nickel plated high alloy tool steel and fully potted to IP65 to protect from water and moisture damage. The standard output is 2 mV/V (for example, 20 millivolts full scale with 10V excitation) that can be used with any of our load cell digital displays or a signal conditioner to interface to a PC, PLC, or data recorder.

Capacities: 2.5K, 5K, 7.5K, 10K, 25K, 35K, 45K, 70K, 100K LB

Wiring Code:

+Excitation: Red -Excitation: Yellow
 +Sense: Brown -Sense: Black
 +Signal: Blue -Signal: White

Capacity: LB		D	D1	H	H1	H2	L
2.5K	inch	4.53	.87	1.69	.47	.33	.31
	mm	115	22	43	12	8.4	8
5K	inch	4.72	1.02	1.77	.47	.33	.31
	mm	120	26	45	12	8.4	8
7.5K, 10K	inch	5.04	.79	1.81	.31	.41	.28
	mm	128	20	46	8	10.4	7
25K	inch	6.30	1.57	2.48	.59	.41	.39
	mm	160	40	63	15	10.4	10
35K	inch	7.64	1.65	2.68	.79	.49	.47
	mm	194	42	68	20	12.4	12
45K	inch	8.66	1.73	2.87	.87	.49	.47
	mm	220	44	73	22	12.4	12
70K	inch	9.06	1.89	3.07	.98	.49	.47
	mm	230	48	78	25	12.4	12
100K	inch	10.39	2.05	3.54	1.18	.49	.47
	mm	264	52	90	30	12.4	12



Combined Error:	0.03% FS	Zero Balance:	2.0% FS
Rated Output:	2.0 mV/V Nominal	Temp. Effect on Output:	0.03% FS/10C
Non-Linearity:	0.03% FS	Temp. Effect on Zero:	0.03% FS/10C
Hysteresis:	0.03% FS	Compensated Temp.:	-10 to 55C
Non-Repeatability:	0.01% FS	Operating Temp.:	-35 to 65C
Creep (%FS/30min.)	0.02	Recommended Excitation:	10VDC
Input Resistance:	700 +/- 7 Ohms	Safe Overload:	150% FS
Output Resistance:	700 +/- 7 Ohms	Ultimate Overload:	200% FS
Insulation Resistance Meg Ohm:	=5,000 (50Vdc)	Cable Length: 2.5K—7.5K	10 feet
		10K—25K	13 feet
		35K—100K	16 feet

Load Cell Central
 216 Main St. / PO Box 91
 Monroeton, PA 18832
 Web: www.800loadcel.com

Toll Free: 1-800-562-3235
 Ph: 1-570-265-5015
 Fax: 1-570-265-5148
 Email: sales@800loadcel.com