

Load Cell Central

1-800-LOADCEL

Wireless Tension Link Load Cell / Crane Scale

Model: WL-CTL1

Ranges from 10,000 to 150,000 lbs.

The WL-CTL1 wireless tension link load cell is ideal for weighing and lifting applications such as with cranes, hoists, and winching, that may not lend themselves to standard cabled load cells--- where the cable could get damaged or where it may not be safe to be close to the load cell during a lift. When used with the WDD1 wireless LCD display or the WSL-S1-2 receiver the load cell has a wireless communication "line of sight" range of 50-100 meters (165 to 330 feet) depending on the environment. The battery life is approximately 300 hours of continuous use. The load cell is manufactured from heat treated alloy steel and is sealed to IP66 which makes it suitable for use outdoors.

Higher capacity and stainless steel load cells are also available.

WL-CTL1 Features:	
Combined Error:	0.25% FS
Load Cell Battery Life:	Approx. 300 Hours
Wireless Range:	Approx. 50-100 Meters
Operating Temp.:	-35 to 65C
Safe Overload:	200% FS
Ultimate Overload:	500% FS



**Standard Capacities: 10K, 25K,
50K, 75K, 100K, 150K LB.**

WL-CTL1 Options:

- WDD1 LCD Portable Display (pictured above)
- WSL-S1-2 Receiver used so that any standard digital indicator can communicate with the WL-CTL1 tension link load cell.
- Shackles
- Pelican® Carry Case



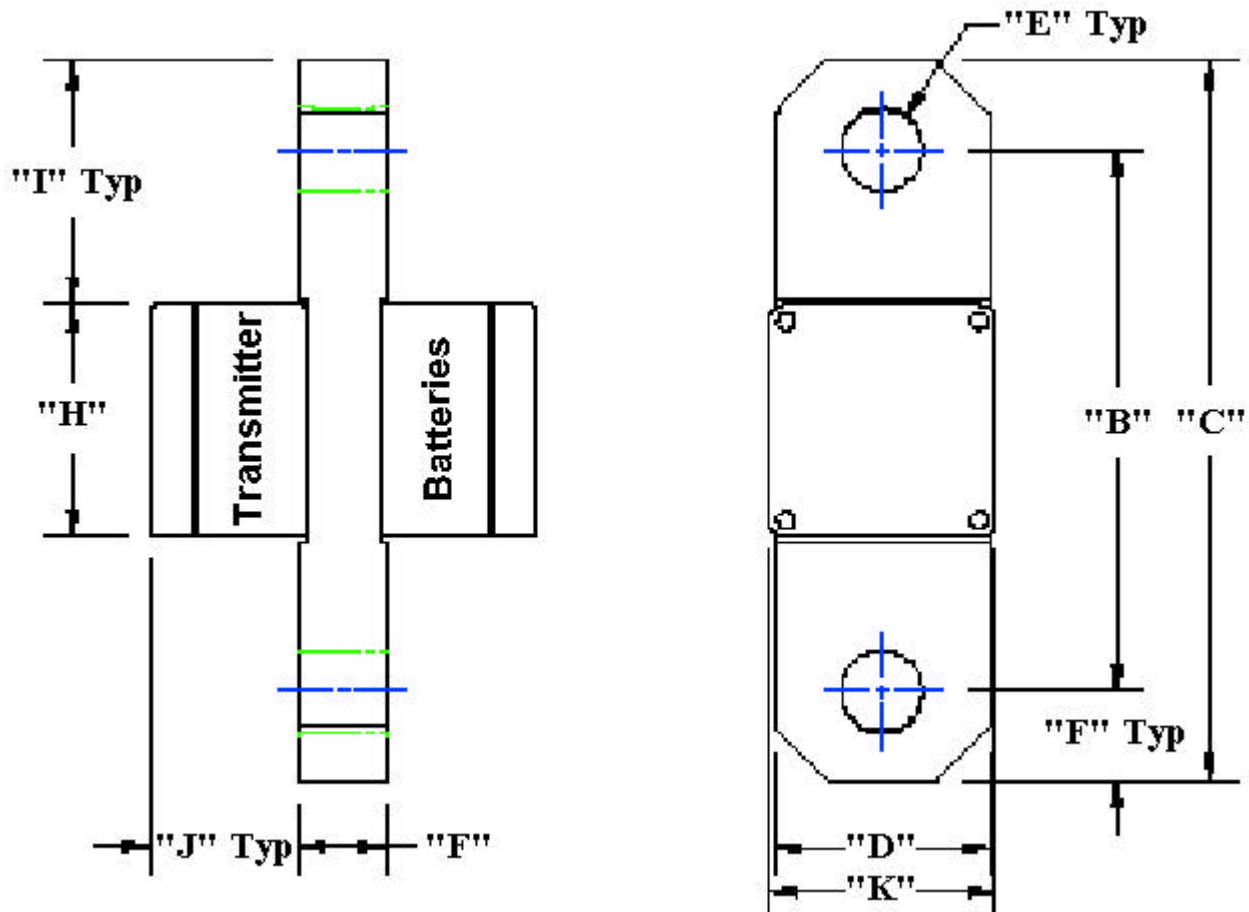
Load Cell Central
216 Main St. / PO Box 91
Monroeton, PA 18832
Web: www.800loadcel.com

Toll Free: 1-800-562-3235
Ph: 1-570-265-5015
Fax: 1-570-265-5148
Email: sales@800loadcel.com

Load Cell Central

1-800-LOADCEL

Dimensions:



Capacity	A	B	C	D	E	F	H	I	J	K
10K LB	1.25	7.50	10.00	3.00	1.13	1.25	3.23	3.39	2.05	3.15
25K LB	1.25	7.75	11.00	3.00	1.63	1.63	3.23	3.89	2.05	3.15
50K LB	1.63	8.50	12.75	3.63	2.13	2.13	3.15	4.80	2.05	3.28
75K LB	1.88	9.37	14.25	4.50	2.38	2.44	3.15	5.55	2.17	3.28
100K LB	1.94	9.38	14.75	5.00	2.38	2.69	3.15	5.80	2.17	3.28
150K LB	2.44	11.00	17.50	6.75	2.88	3.25	3.15	7.18	2.17	3.28