

Load Cell Central

1-800-LOADCEL

Stainless Steel Beam Load Cell (BBS interchange)

Model: BBNC

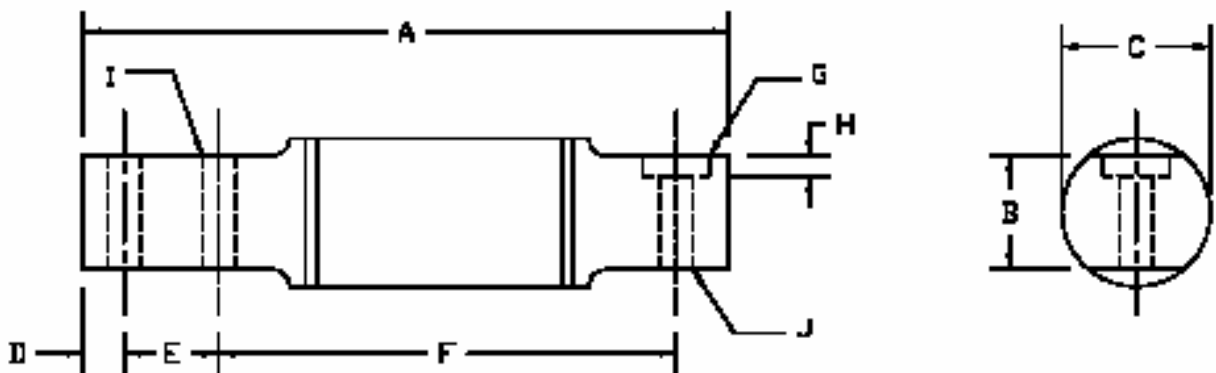
Ranges from 50 to 7,500 LB



Cable Color Code:

Green : +Excitation
 Black : -Excitation
 White : +Signal
 Red : -Signal

Capacities: 50, 100, 200, 250, 500, 1Kse, 1Kle, 2.5K, 5K, & 7.5K lb.



Dimensions: (Inches)

Capacity (LB)	A	B	C	D	E	F	G	H	I	J
50LB - 100LB	6.00	1.06	1.38	0.38	0.88	4.25	--	--	0.31	0.31
200LB - 1Kse	6.62	1.06	1.38	0.50	1.12	4.25	--	--	0.51	0.51
1Kle - 2.5K	11.38	1.50	3.00	0.50	1.75	8.25	1.19	0.12	0.53	0.62
5K - 7.5K	12.75	2.75	4.50	0.75	2.00	8.50	1.38	0.19	0.78	0.76

Specifications:

Rated Output:	2.00 mV/V +/-1%	Compensated Temp.:	-15 to 115F
Non-Linearity:	+/- 0.03% FS	Recommended Excitation:	10VDC
Hysteresis:	+/- 0.02% FS	Maximum Excitation:	15Vdc
Bridge Resistance: (50LB - 1Kse)	750 Ohms Nominal	Safe Overload:	150% FS
Bridge Resistance: (1Kle - 7.5K)	350 Ohms Nominal	Cable Length:	20'
Zero Balance:	+/- 1.00% FS	Seal Type:	Environmentally Sealed

Load Cell Central follows a policy of continuous improvement and reserves the right to change specifications without notice. © 2008

Load Cell Central
 216 Main St. / PO Box 91
 Monroeton, PA 18832
 Web: www.800loadcel.com

Toll Free: 1-800-562-3235
 Ph: 1-570-265-5015
 Fax: 1-570-265-5148
 Email: sales@800loadcel.com