

Load Cell Central

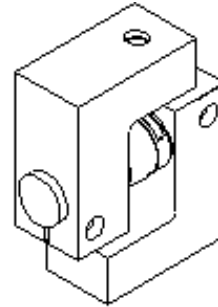
1-800-LOADCEL

Universal Load Cell

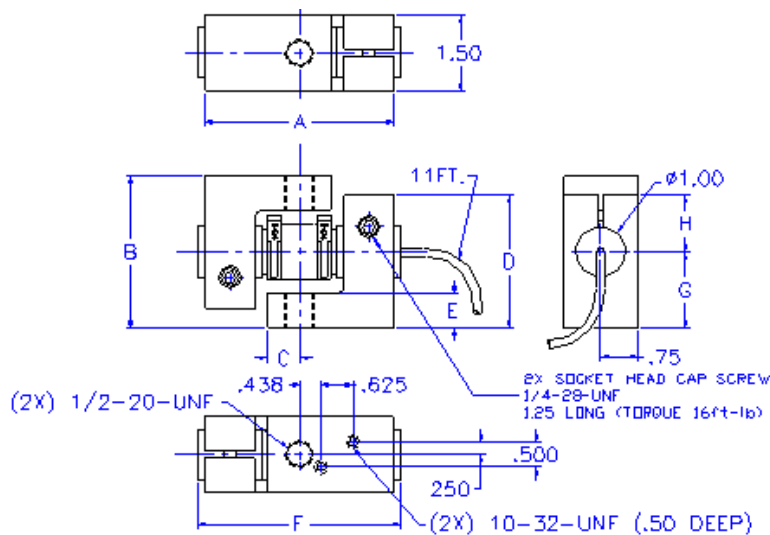
Model: BSB2 Direct interchange for the Revere 263D

Ranges from 50 to 3,000 lbs.

The BSB2 load cell is designed for use in either tension or compression. The BSB2 is constructed of 17-4 stainless steel and sealed to IP67 suitable for most harsh industrial applications.



Capacities: 50, 100, 200, 250, 300, 500, 1K, 2K, 3K lb.



CAPACITY(lb)	A	B	C	D	E	F	G	H
50 — 1K	3.75	3.00	.63	2.62	.67	4.00	1.50	1.125
2K — 3K	4.00	4.56	.71	3.75	1.00	4.38	2.28	1.47

Combined Error:	0.05% FS	Operating Temp.:	-50 to 90?
Rated Output:	3.00 +/- 0.25% mV/V	Safe Overload:	150% FS
Zero Balance:	1.0% FS	Ultimate Overload:	300% FS
Non-Repeatability:	0.01% FS	Safe Side Load:	50% FS
Input Resistance:	450 Ohms Nominal	Side Load Rejection Ratio:	500:1
Output Resistance:	350 +/- 5 Ohms	Cable Length:	11'
Recommended Excitation:	10Vdc		

Load Cell Central follows a policy of continuous improvement and reserves the right to change specifications without notice. © 2008

Load Cell Central
216 Main St. / PO Box 91
Monroeton, PA 18832
Web: www.800loadcel.com

Toll Free: 1-800-562-3235
Ph: 1-570-265-5015
Fax: 1-570-265-5148
Email: sales@800loadcel.com