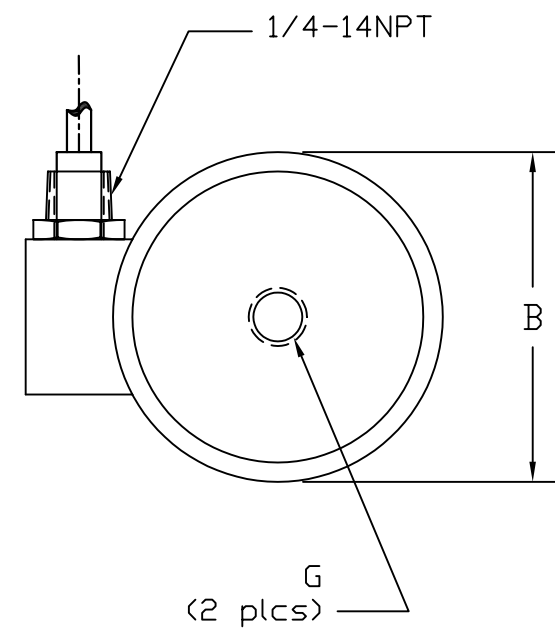
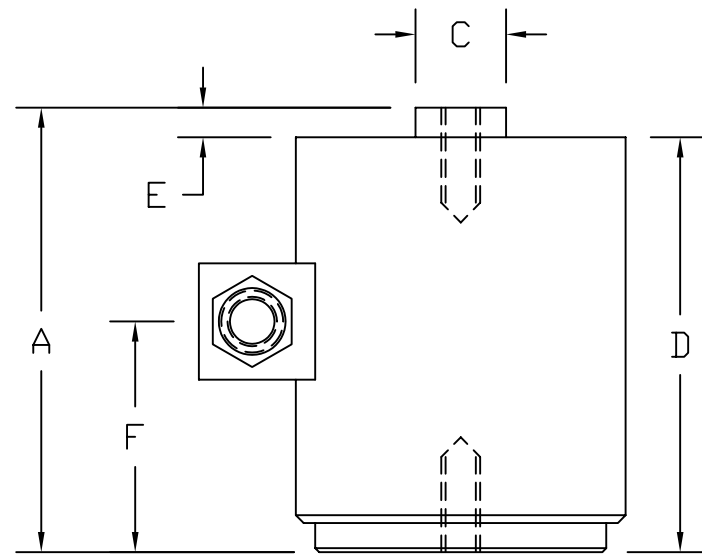


REVISIONS							
ZONE	LTR.	DESCRIPTION	DATE	ECN	BY	CKD	APVD
-	-	INITIAL RELEASE	11/03/06	-	-	-	-



**PERFORMANCE SPECIFICATIONS:**

- CAPACITIES: 200LB, 300LB, 500LB, 750LB, 1K, 2K, & 3K LB
- RATED OUTPUT: 3.00 mV/V ±1%
- SAFE OVERLOAD: 150% FS
- EXCITATION VOLTAGE: 10-15V AC/DC
- BRIDGE RESISTANCE: 350 OHMS
- ZERO BALANCE: ±1.00% FS
- SEAL TYPE: HERMETICALLY SEALED
- NON-LINEARITY: ±0.03% FS
- HYSTERESIS: ±0.02% FS
- COMPENSATED TEMPERATURE RANGE: -10°C - +50°C
- TEMPERATURE EFFECT ON ZERO: ±0.02%FS/10°C
- TEMPERATURE EFFECT ON OUTPUT: ±0.02%FS/10°C
- INSULATION RESISTANCE: >5000 MEGOHMS
- LOAD CELL CABLE: 4 CONDUCTOR, 50 FT
- LOAD CELL WIRING:
  - GREEN +EXC
  - BLACK -EXC
  - WHITE +SIG
  - RED -SIG
  - BRAID/YELLOW: SHIELD

RATED CAPACITY	DIMENSIONS									
	A	B	C	D	E	F	G			
200LB-300LB	3.38	2.75	0.75	2.97	0.75	1.75	3/8-24UNF x 0.38deep			
500LB-1K	4.56	3.50	0.75	4.19	0.75	2.25	1/2-20UNF x 0.50deep			
2K-3K	5.00	4.00	0.75	2.58	0.75	2.50	1/2-20UNF x 0.50deep			

\*DO NOT ALTER WITHOUT AGENCY NOTIFICATION\*

**Load Cell Central**  
1-800-LOADCEL

**Model: CT3C**  
**Universal Canister Load Cell**

	THIS DRAWING USES THIRD ANGLE PROJECTION	APPROVALS	DATE
		DRAWN: MP	11/03/06
THIS DOCUMENT CONTAINS PROPRIETARY INFORMATION AND SUCH INFORMATION MAY NOT BE REPRODUCED OR DISCLOSED FOR ANY PURPOSE OR USED TO PRODUCE THE ARTICLE OR SUBJECT WITHOUT WRITTEN PERMISSION.	TOLERANCES UNLESS OTHERWISE SPECIFIED .XX-±.01 .XXX-±.005 FRACTIONS-±1/16" ANGLES: ±1/2"	CHECKED: AA	11/03/06
		ENGINEER: WH	11/03/06
		APPROVED: WH	11/03/06
MATERIAL		STAINLESS STEEL	

SCALE	SIZE	PART/DRAWING NO.	REV.
NONE	B		-
SHEET			1 OF 1