

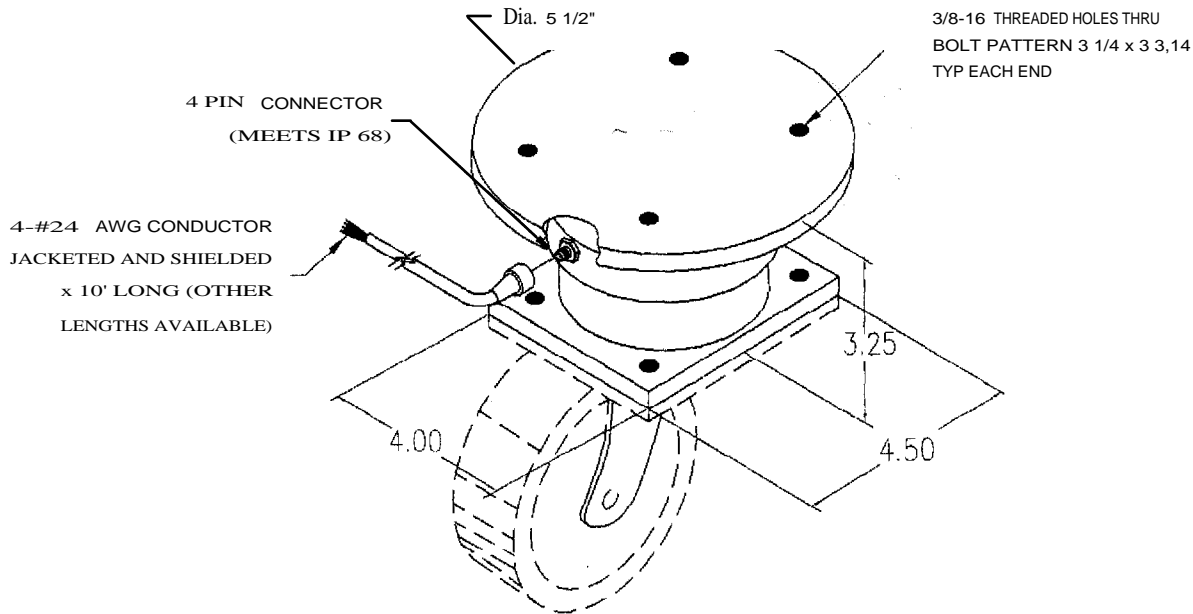
HIGH PURITY CASTER MOUNT WEIGH SYSTEM

MODEL LCC-CWS

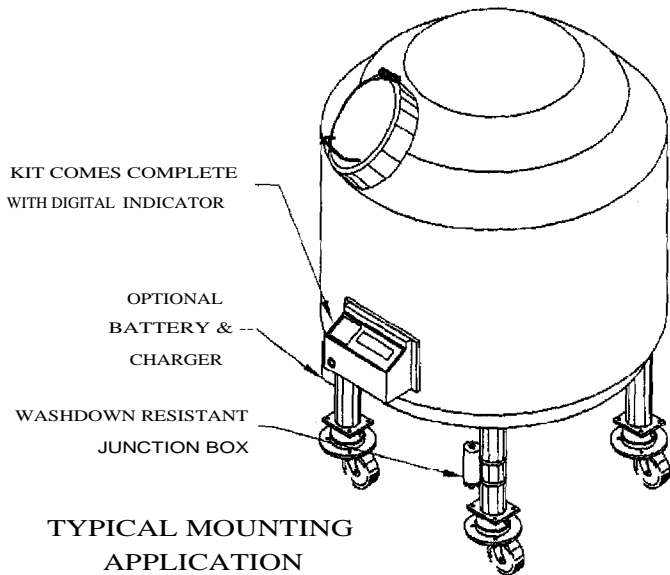
HERMETICALLY SEALED STAINLESS STEEL WELDED CONSTRUCTION

SYSTEM CAPACITIES: 0-4000 LBS.

(EACH CASTER CELL RATED TO 1000 LBS)



TYPICAL APPLICATIONS THE LCC-CWS IS DESIGNED SPECIFICALLY TO WORK MOUNTED TO A CASTER TO ALLOW FOR CONSTANT WEIGHING OF PORTABLE TANKS. EXCELLENT FOR INVENTORY CONTROL, BATCH WEIGHING, OR ANY OTHER WEIGHING APPLICATION WHERE EASE OF USE AND HIGH ACCURACY ARE A CONCERN.



SPECIFICATION

| | | |
|--------------------------|-------|---------------|
| ACCURACY: | | .0.10% F.S, |
| COMP. TEMP. RANGE: | | 0 to 150 °F |
| SAFE TEMP. RANGE: | | -40 to 180 °F |
| TEMP. EFFECT, ON OUTPUT: | | .0007% / °F |
| TEMP. EFFECT ON ZERO: | | .0013% /°F |
| SAFE OVERLOAD: | | 200% |

LOAD CELL CENTRAL
PO BOX 91, 216 MAIN ST.
MONROETON, PA 18832
PH: 1-570-265-5015 FAX: 1-570-265-5148
[HTTP://WWW.800LOADCEL.COM](http://www.800LOADCEL.COM)
EMAIL: SALES@800LOADCEL.COM

OPTIONS: OPERATING TEMP., CABLE LENGTH, 0-5V, 4-20mA
S.S. ARMORED MIL. TEF LON CABLE, CALIBRATION,
MIL-STD 45662. OTHER OPTIONS OR VARIATIONS AVAILABLE.

SAFETY CONSIDERATIONS: Always use load cells below the specified load rating. Load applied **must** be in the primary load axis. Extraneous loads or compound stress must be avoided De-rate load cell maximum load or supply safety hardware where failure could cause injury or damage. (I.E. safety chains, safety rods etc.) Do not jerk load or apply load at high rate of speed. Inspect routinely for damage excessive wear or corrosion, replace if found. Consult a qualified engineer prior to use.