

Load Cell Central

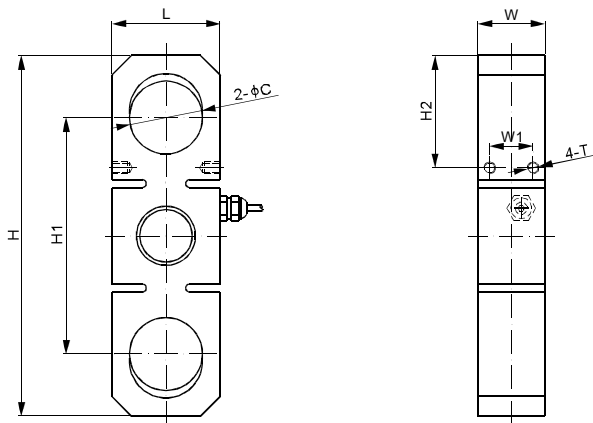
1-800-LOADCEL

Tension Link Load Cell

Model: DCL10

Ranges from 1,000 to 120,000 KG
(2,200 to 264,500 LB)

The DCL10 load cell is suitable for a wide range of industrial applications ranging from crane scales to mooring tests. It is constructed of alloy steel and fully potted to IP67. The eyes in the load cell are designed to fit standard off-the-shelf shackles, which are available through Load Cell Central. Hermetically sealed load cells for use in extreme environments including submersible applications are also available.



Capacities: 1,000 / 2,000 / 5,000 / 10,000 /
20,000 / 30,000 / 50,000 / 75,000 /
100,000 / 120,000 KG

Wiring Code:

+Excitation: Red -Excitation: Black
+Signal: Green -Signal: White

DIMENSIONS

RATED CAPACITY	C	H	H1	H2	L	W	W1	T
t/mm								
1	15.0	74.0	49.5	20.5	20.0	12.0	7.0	4-M3 Depth5
2	20.0	109.5	75.5	30.5	28.0	15.0	8.0	4-M3 Depth5
5	27.0	140.0	93.0	41.0	38.0	25.0	15.0	4-M6 Depth6
10	37.0	183.0	120.0	57.0	55.0	34.0	22.0	4-M6 Depth8
20	53.0	252.0	164.0	82.0	74.0	50.0	30.0	4-M6 Depth8
30	60.0	307.5	202.0	93.0	86.0	60.0	40.0	4-M8 Depth12
50	73.0	390.0	257.0	116.0	110.0	75.0	40.0	4-M12 Depth20
75	88.0	486.0	324.0	147.0	135.0	90.0	60.0	4-M12 Depth20
100	102.0	580.0	389.0	172.0	160.0	100.0	60.0	4-M12 Depth20
120	102.0	580.0	389.0	172.0	160.0	120.0	60.0	4-M12 Depth20
lb/inches (conversion of above dimensions)								
2,204.6	0.59	2.91	1.95	0.81	0.79	0.47	0.28	4-M3 Depth0.20
4,409.2	0.79	4.31	2.97	1.20	1.10	0.59	0.31	4-M3 Depth0.20
11,023.1	1.06	5.51	3.66	1.61	1.50	0.98	0.59	4-M6 Depth0.24
22,046.2	1.46	7.20	4.72	2.24	2.17	1.34	0.87	4-M6 Depth0.31
44,092.5	2.09	9.92	6.46	3.23	2.91	1.97	1.18	4-M6 Depth0.31
66,138.7	2.36	12.11	7.95	3.66	3.39	2.36	1.57	4-M8 Depth0.47
110,231.1	2.87	15.35	10.12	4.57	4.33	2.95	1.57	4-M12 Depth0.79
165,346.7	3.46	19.13	12.76	5.79	5.31	3.54	2.36	4-M12 Depth0.79
220,462.2	4.02	22.83	15.31	6.77	6.30	3.94	2.36	4-M12 Depth0.79
264,554.7	4.02	22.83	15.31	6.77	6.30	4.72	2.36	4-M12 Depth0.79

Combined Error:	0.03% FS	Insulation Resistance MΩ:	≥2,000 (50VDC)
Rated Output:	3 mV/V Nominal	Compensated Temp.:	-10 to 40°C
Non-Linearity:	0.03% FS	Operating Temp.:	-35 to 65°C
Hysteresis:	0.03% FS	Recommended Excitation:	10VDC
Non-Repeatability:	0.02% FS	Safe Overload:	200% FS
Input Resistance:	350Ω Nominal	Ultimate Overload:	400% FS
Output Resistance:	350Ω Nominal	Cable:	10,000KG and below 19.6' (6 meters) / 20,000KG and up 32.8' (10 meters)

Load Cell Central follows a policy of continuous improvement and reserves the right to change specifications without notice. © 2016

Load Cell Central
28175 Rt 220
Milan, PA 18831

Web: www.800loadcel.com
Email: sales@800loadcel.com

Toll Free: 1-800-562-3235
Ph: 1-570-265-5015
Fax: 1-570-265-5148