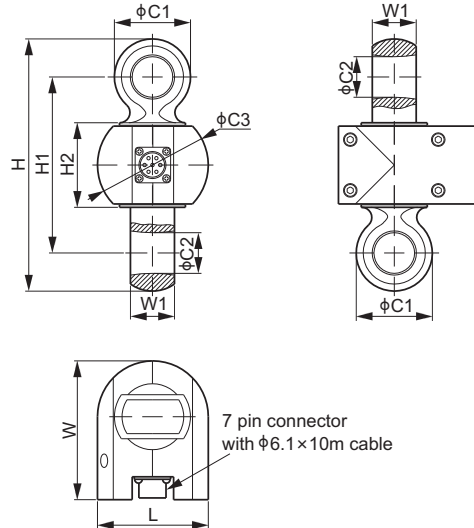


## DCL12 & DCL12-S1



Capacities given in metric tons, dimensions in mm.

### DIMENSIONS

RATED CAPACITY	C1	C2	C3	H	H1	H2	L	W	W1	SUGGESTED SHACKLE
<b>DCL12:</b>										
<b>t, mm</b>										
0.5; 1; 2	30.0	14.0	43.0	102.0	68.0	38.0	43.0	63.0	15.0	2BS-2t
3	32.0	18.0	55.0	119.0	80.0	39.0	55.0	83.0	18.0	2BS-3.25t
5	45.0	24.0	66.0	153.0	104.0	50.0	66.0	82.0	26.0	2BS-5t
10	60.0	33.0	73.0	195.0	125.0	50.0	73.0	90.5	40.0	2BS-12.5t
20	75.0	41.0	82.0	225.0	145.0	53.0	82.0	110.0	53.0	2BS-21t
30	87.0	44.0	92.0	248.0	150.0	50.0	92.0	125.0	58.0	Crosby G-2140-30t or 2BS-30t
50	115.0	62.0	130.0	331.0	206.0	74.0	130.0	159.5	79.0	Crosby G-2140-55t or 2BS-50t
100	170.0	88.0	-	442.0	260.0	65.0	176.0	213.0	122.0	Crosby G-2140-120t or 2BS-110t
<b>lb, inches (conversion of above dimensions)</b>										
1,102.3; 2,205.1; 4,409.2	1.18	0.55	1.69	4.02	2.68	1.50	1.69	2.48	0.59	2BS-2t
6,613.9	1.26	0.71	2.17	4.69	3.15	1.54	2.17	3.27	0.71	2BS-3.25t
11,023.1	1.77	0.94	2.60	6.02	4.09	1.97	2.60	3.23	1.02	2BS-5t
22,046.2	2.36	1.30	2.87	7.68	4.92	1.97	2.87	3.56	1.57	2BS-12.5t
44,092.5	2.95	1.61	3.23	8.86	5.71	2.09	3.23	4.33	2.09	2BS-21t
66,138.7	3.43	1.73	3.62	9.76	5.91	1.97	3.62	4.92	2.28	Crosby G-2140-30t or 2BS-30t
110,231.1	4.53	2.44	5.12	13.03	8.11	2.91	5.12	6.28	3.11	Crosby G-2140-55t or 2BS-50t
220,462.3	6.69	3.46	-	17.4	10.24	2.56	6.93	8.39	4.80	Crosby G-2140-120t or 2BS-110t
<b>DCL12-S1:</b>										
<b>t, mm</b>										
0.5; 1; 2	33.0	18.0	43.0	110.0	74.0	38.0	43.0	63.0	18.0	Crosby G-2130-2t or 3BS-2t or 2BS-2.5t
3	35.0	21.0	55.0	129.0	88.0	39.0	55.0	83.0	25.0	Crosby G-2130-3.25t or 3BS-3.25t
5	50.0	27.0	66.0	164.6	110.6	50.0	66.0	82.0	33.0	Crosby G-2130-6.5t or 3BS-6.5t
10	63.0	37.0	73.0	205.0	135.0	50.0	73.0	90.5	41.0	Crosby G-2130-12t or 3BS-12t
20	90.0	53.0	82.0	249.0	153.0	53.0	82.0	110.0	66.0	Crosby G-2130-25t or 3BS-25t
<b>lb, inches (conversion of above dimensions)</b>										
1,102.3; 2,205.1; 4,409.2	1.30	0.71	1.69	4.33	2.91	1.50	1.69	2.48	0.71	Crosby G-2130-2t or 3BS-2t or 2BS-2.5t
6,613.9	1.38	0.83	2.17	5.08	3.46	1.54	2.17	3.27	0.98	Crosby G-2130-3.25t or 3BS-3.25t
11,023.1	1.97	1.06	2.60	6.48	4.35	1.97	2.60	3.23	1.30	Crosby G-2130-6.5t or 3BS-6.5t
22,046.2	2.48	1.46	2.87	8.07	5.31	1.97	2.87	3.56	1.61	Crosby G-2130-12t or 3BS-12t
44,092.5	3.54	2.09	3.23	9.80	6.02	2.09	3.23	4.33	2.60	Crosby G-2130-25t or 3BS-25t

Load Cell Central follows a policy of continuous improvement and reserves the right to change specifications without notice. © 2016

**Load Cell Central**  
28175 Route 220  
Milan, PA 18831

Web: [www.800loadcel.com](http://www.800loadcel.com)  
Email: [sales@800loadcel.com](mailto:sales@800loadcel.com)

**Toll Free: 1-800-562-3235**  
Ph: 1-570-731-7048  
Fax: 1-570-731-7054

## DCL12 & DCL12-S1

SPECIFICATIONS			
<b>Full Scale Output</b>	2.0 ± 0.25% mV/V	<b>Recommended Excitation</b>	10V (15V Maximum)
<b>Zero Balance</b>	± 0.02 mV/V	<b>Insulation Resistance</b>	>2 [ 50V DC ] G Ω
<b>Non-linearity</b>	< ± 0.05%	<b>Compensated Temperature Range</b>	-10°C to 50°C / 14°F to 122°F
<b>Repeatability</b>	< ± 0.05%	<b>Safe Overload</b>	200% of full scale
<b>Hysteresis Error</b>	< ± 0.05%	<b>Breaking Overload</b>	500% of full scale
<b>Creep in 30 min.</b>	< ± 0.03%	<b>Seal Type / IP Rating</b>	Environmentally Sealed /IP66
<b>Input Resistance</b>	1100 Ω ± 50	<b>Cable Color Code</b>	Exc+ Red      Exc- Black
<b>Output Resistance</b>	1000 Ω ± 10		Sig+ Green     Sig- White
<b>Element Material</b>	Alloy Steel, Powder Coating		Sen+ Blue      Sen- Yellow
			Shield Bare

### PART NUMBER

DCL12		
Rated Capacity	Part No.	Weight with Cable (kg) Approx.
0.5t.....	DCL12-0.5t.....	0.8
1t.....	DCL12-1t.....	0.8
2t.....	DCL12-2t.....	0.8
3t.....	DCL12-3t.....	1.2
5t.....	DCL12-5t.....	1.7
10t.....	DCL12-10t.....	2.4
20t.....	DCL12-20t.....	3.8
30t.....	DCL12-30t.....	6.2
50t.....	DCL12-50t.....	13.3
100t.....	DCL12-100t.....	32.7

DCL12-S1		
Rated Capacity	Part No.	Weight with Cable (kg) Approx.
0.5t.....	DCL12-S1-0.5t.....	1.1
1t.....	DCL12-S1-1t.....	1.1
2t.....	DCL12-S1-2t.....	1.1
3t.....	DCL12-S1-3t.....	1.3
5t.....	DCL12-S1-5t.....	2.0
10t.....	DCL12-S1-10t.....	2.5
20t.....	DCL12-S1-20t.....	4.0

Load Cell Central follows a policy of continuous improvement and reserves the right to change specifications without notice. © 2016