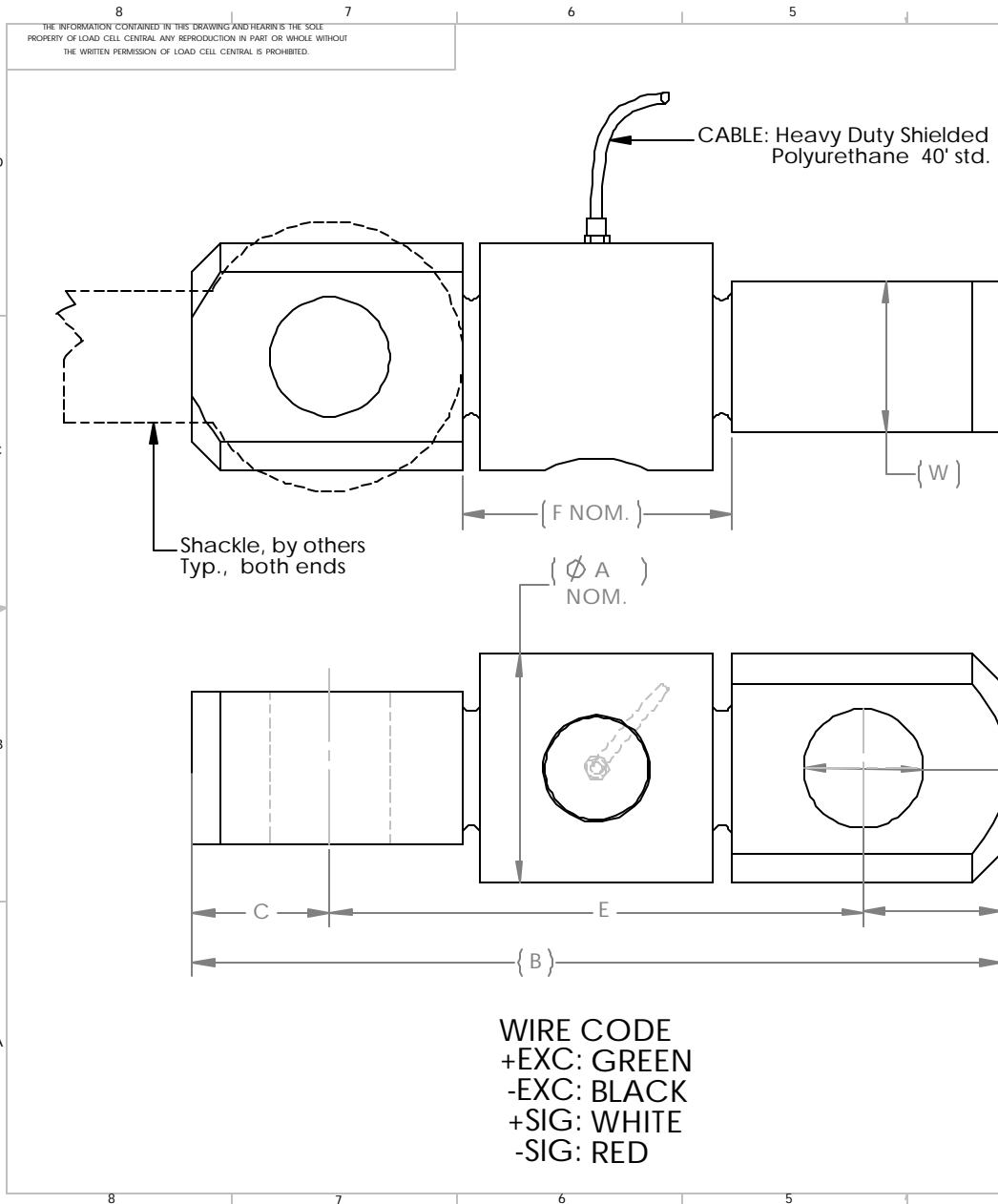


# Load Cell Central

1-800-LOADCEL



CAPACITY: 5K TO 500K LB  
 CONSTRUCTION: STAINLESS STEEL, HERMETIC  
 EXC. VOLTAGE: 10-15 VDC or VAC  
 OUTPUT: 3 mV/V NOM.  
 TEMPERATURE RANGE: 10 to 120 °F  
 BRIDGE RESISTANCE: 350 OHMS NOM.  
 INSULATION RESISTANCE: 5000 MEGOHMS MIN.  
 ZERO BALANCE: ± 0.1% F.S.  
 LINEARITY: ± 0.05% F.S.  
 REPEATABILITY: ± 0.03% F.S.  
 MAX. LOAD SAFE: 150% OF RATED CAP.  
 MAX. LOAD ULTIMATE: 300% OF RATED CAP.

REVISIONS		DATE	APPROVED
REV. A	ADDED BRIDGE RESISTANCE (350 OHMS)	3/5/01	JS

CAPACITY	A	B	C	D	E	F	W
5K TO 10K	2.00	6.50	0.88	0.78	4.75	2.00	0.75
25K TO 45K	2.75	8.00	1.38	1.55	5.25	2.30	1.50
50K TO 75K	3.25	9.50	1.73	2.13	6.00	2.60	2.00
100K TO 150K	4.00	13.00	2.25	2.55	8.50	4.00	3.00
200K TO 250K	6.00	21.20	3.60	3.13	14.00	7.00	4.00
300K TO 500K	7.50	24.00	5.00	4.50	14.00	6.50	6.00

NOTE: -C IS CAPACITY  
 IN 1,000 LB INCREMENTS  
 I.E.: DCL4-5 IS 5,000 LB

UNLESS OTHERWISE SPECIFIED DIMENSIONS ARE IN INCHES TOLERANCES ARE:		<b>LOAD CELL CENTRAL</b> 1-800-562-3235 216 Main St. Monroeton, PA 18832	
FRACTIONS .XX ± .01	DECIMALS .XXX ± .005 ±1*	DATE 6/21/01	Model: DCL4 5K TO 500K TENSION LINK @ 3mV/V
ANGLES ±1/64	.XXX ± .0005	CHECKED JS 8/11/00	
MATERIAL	FINISH	RESP ENG	DWG. NO. 1200308-C
HEAT TREAT	QUAL ENG		REV. MODEL FILE
DO NOT SCALE DRAWING		SCALE	DWG. FILE

Load Cell Central follows a policy of continuous improvement and reserves the right to change specifications without notice. © 2008

Load Cell Central  
 216 Main St. / PO Box 91  
 Monroeton, PA 18832  
 Web: [www.800loadcel.com](http://www.800loadcel.com)

Toll Free: 1-800-562-3235  
 Ph: 1-570-265-5015  
 Fax: 1-570-265-5148  
 Email: [sales@800loadcel.com](mailto:sales@800loadcel.com)