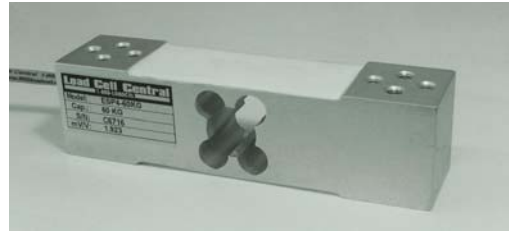


Economical Moment Compensated Load Cell
Model: ESP4
Ranges from 50 to 300KG

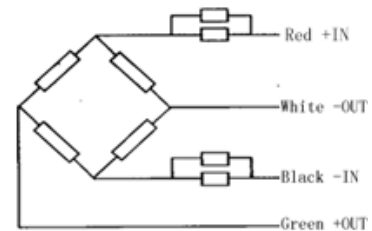


Capacities: 50LE, 60, 80, 100, 150, 200, 300KG

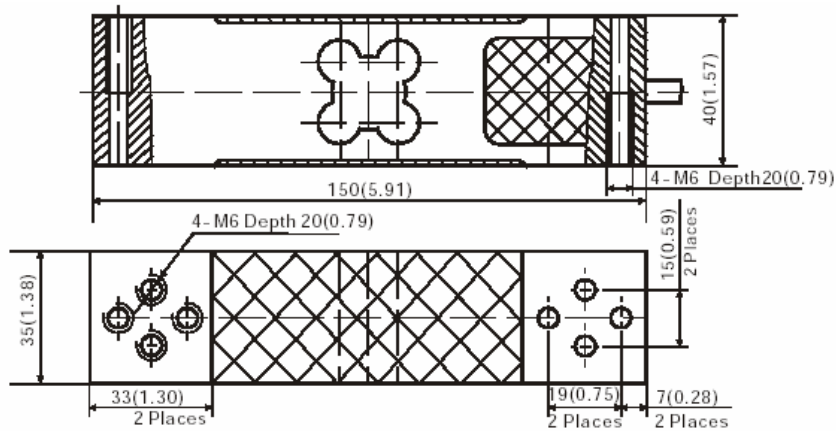
The LCC-ESP4 load cell is designed for high capacity electronic bench and platform scales, medical scales, and any application where a low profile load cell design is a must. Low in cost and suitable for a wide variety of OEM and force measurement applications, the LCC-ESP4 load cell is readily available in large or small quantities. The strain gauge area and electronic parts are coated and sealed to provide an IP65 protection class rating.

Max. Recommended platform: 400x400mm (16"x16")

ELECTRICAL CONNECTION:



Dimensions in mm (inches)



Combined Error:	0.02% FS	Zero Balance:	2.0% FS
Rated Output:	2.0 +/- 0.2 mV/V	Temp. Effect on Output:	0.014% FS/10°C
Non-Linearity:	0.017% FS	Temp. Effect on Zero:	0.017% FS/10°C
Hysteresis:	0.02% FS	Compensated Temp.:	-10 to 40°C
Non-Repeatability:	0.01% FS	Operating Temp.:	-35 to 65°C
Creep (%FS/30min.)	0.015	Recommended Excitation:	10VDC
Input Resistance:	406 +/- 6Ω	Safe Overload:	150% FS
Output Resistance:	350 +/- 3Ω	Ultimate Overload:	200% FS
Insulation Resistance MΩ:	≥5,000 (50Vdc)	Cable Length:	2 meters (6.5')

Load Cell Central follows a policy of continuous improvement and reserves the right to change specifications without notice. © 2015