

Load Cell Central

1-800-LOADCEL

Alloy Steel Bellows Beam Load Cell

Model: HBBF

Ranges from 10 to 200 kg



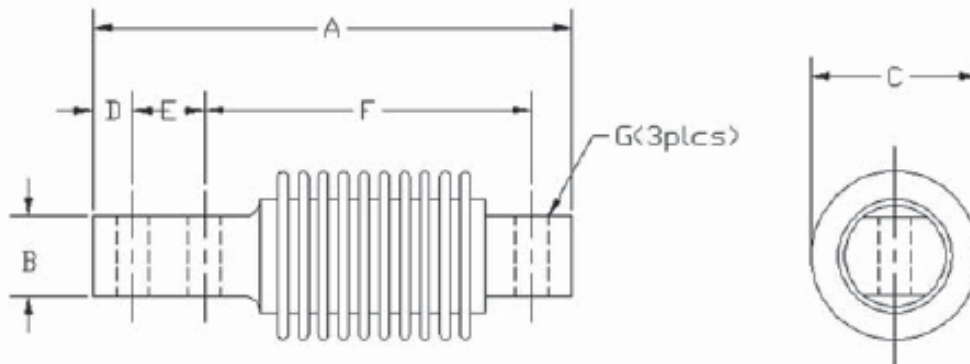
This bending beam is designed for harsh industrial environments. The alloy steel construction, welded steel bellows, and special moisture resistant components ensure the load cell will perform well under harsh conditions.

The low profile design makes it ideal for low profile platforms, hopper or tank scales, weighing and packaging machines, and conversion of mechanical to electronic scales.

Capacities: 10, 20, 50, 100, 200 kg.

Cable Color Code:

Green : +Excitation
 Black : -Excitation
 White : +Signal
 Red : -Signal



Capacity		A	B	C	D	E	F	G
10, 20, 50, 100, 200 kg	(inch)	4.72	0.79	1.65	0.39	0.71	3.23	0.32

Specifications:

Rated Output:	2 mV/V Nominal	Compensated Temp.:	-10 to 40C
Combined Error:	0.05% FS	Recommended Excitation:	10Vdc
Maximum Excitation:	15Vdc	Seal Type:	Welded-seal, IP67
Input Resistance:	350 Ohms Nominal	Safe Overload:	150% FS
Output Resistance:	350 Ohms Nominal	Cable Length:	20'

Load Cell Central follows a policy of continuous improvement and reserves the right to change specifications without notice. © 2008

Load Cell Central
 216 Main St. / PO Box 91
 Monroeton, PA 18832
 Web: www.800loadcel.com

Toll Free: 1-800-562-3235
 Ph: 1-570-265-5015
 Fax: 1-570-265-5148
 Email: sales@800loadcel.com