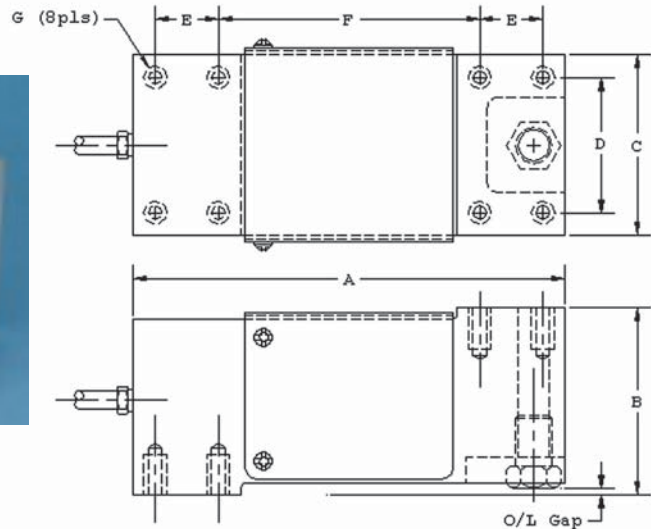
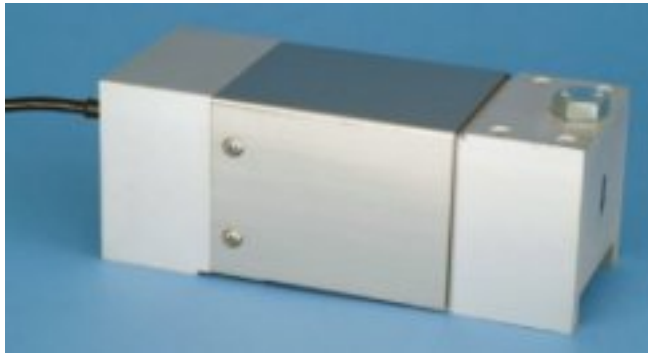


# Load Cell Central

1-800-LOADCEL

## Model: KCBJ Single Point, Aluminum



RATED CAPACITY	DIMENSIONS						
	A	B	C	D	E	F	G
50 to 1000Kg	7.50	2.95	2.95	2.36	0.98	4.91	5/16-18 X 0.62 Deep

### SPECIFICATIONS:

Full Scale Output: 2.0 mV/V  
 Bridge Resistance: 350 ohms, nominal  
 Material/Finish: Aluminum  
 Temperature: Compensated range  
 +14°F TO 104°F / -10°C TO 40°C

Insulation Resistance: 5000 megohms

Seal Type: Environmentally protected  
 Cable Length: 10'

Cable Color Code: Green..... + Excitation  
 Black..... - Excitation  
 White..... + Signal  
 Red..... - Signal

Safe Overload: 150% Full Scale  
 Rated Excitation: 10V AC/DC (15V maximum)  
 Combined Error: 0.03% Full Scale

Warranty: 1 year

Load Cell Central follows a policy of continuous improvement and reserves the right to change specifications without notice. © 2008

Load Cell Central  
 216 Main St. / PO Box 91  
 Monroeton, PA 18832  
 Web: [www.800loadcel.com](http://www.800loadcel.com)

Toll Free: 1-800-562-3235  
 Ph: 1-570-265-5015  
 Fax: 1-570-265-5148  
 Email: [sales@800loadcel.com](mailto:sales@800loadcel.com)