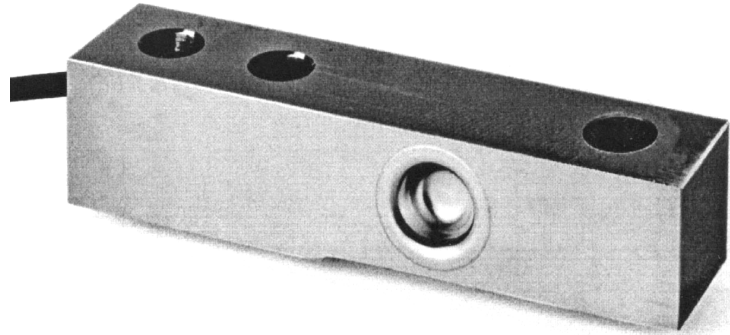


Model: LCS7

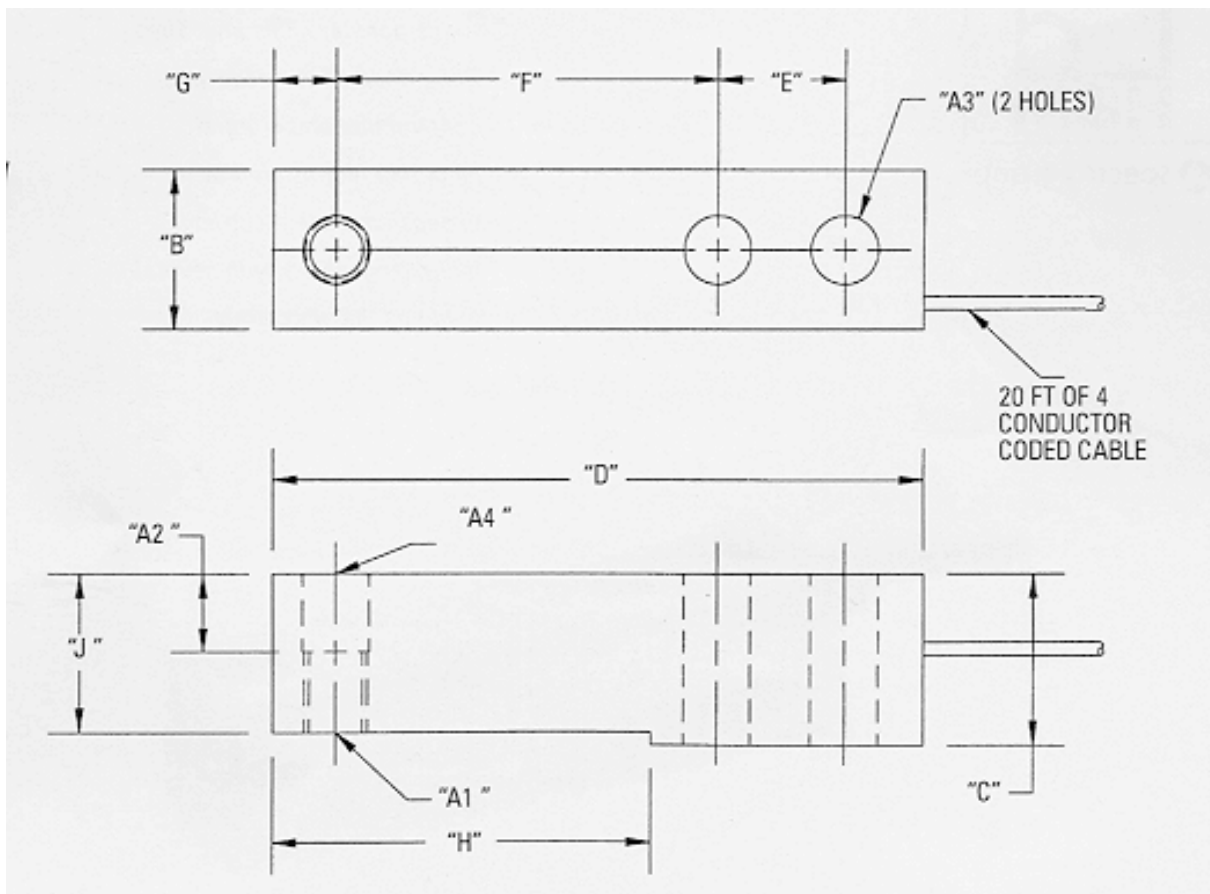
WELDED SEAL
LOAD CELL

- 3 MV/V OUTPUT
- STAINLESS STEEL



Capacities Available:
1k, 2.5k, 4k, 5k lbs

The LCS7 is designed for the harshest industrial applications. The LCS7 offers all stainless steel construction and integral mounting foot as well as dimensional and electrical interchangeability with several load cell manufacturers.



Dimensions (inches)

CAPACITY	A1	A2	A3	A4	B	C	D	E	F	G	H	J
1K-5K Lbs	½-20 UNF-2B	.62	.53	.53	1.21	1.19	5.12	1.00	3.00	.50	2.85	1.12

Load Cell Central

1-800-LOADCEL

Technical Data

Rated capacities	Lbs	1K, 2.5K, 4K, 5K
Rated output	mV/V	3.0 +/- 0.010
Combined error	%	0.03
Nonrepeatability	%	0.01
Creep in 20 min.	%	0.03
Zero balance	%	2.0
Compensated temp. range	°F/°C	+14°...+104° / -10°...+40°
Temperature effects on rated output	% of load / 100°F	0.15
Temperature effects on zero balance	% / 100°F	0.25
Terminal resistance -- input	min. ohms	350
Terminal resistance -- output	nom. ohms	350 +/- 3
Excitation voltage	Max vdc / Vac rms	10 / 15
Insulation resistance	min. Mohms	5,000
Max. safe load	%	100
Ultimate load, ultimate	%	300
Max. side load	%	150
Deflection at rated load	Inches	0.01
Weight	Lbs	2.5 lbs;

Percentages relative to rated output, except as noted.

Cable color code

RED	-SIG
BLACK	-EXC
GREEN	+EXC
WHITE	+SIG
SHIELD	SHIELD

Load Cell Central follows a policy of continuous improvement and reserves the right to change specifications without notice. © 2008

Load Cell Central
 216 Main St. / PO Box 91
 Monroeton, PA 18832
 Web: www.800loadcel.com

Toll Free: 1-800-562-3235
 Ph: 1-570-265-5015
 Fax: 1-570-265-5148
 Email: sales@800loadcel.com