

# Load Cell Central

1-800-LOADCEL

## Model: LCS9

Single Ended Shear Beam Load Cell

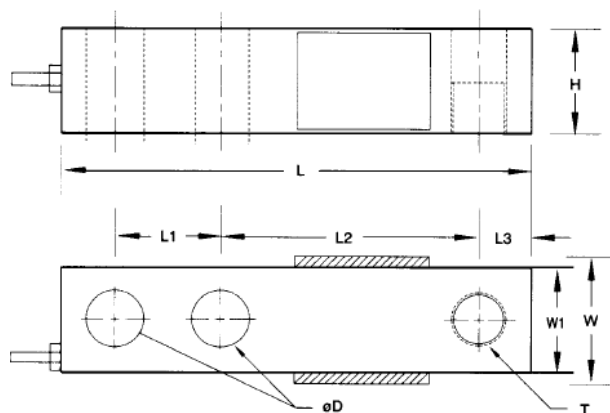
Capacities (lb): 1k, 2k, 2.5k, 4k, 5k, 5k-le, 10k, 20k

The LCS9 load cell is designed for multiple load cell applications such as industrial floor scales, barrel scales, or medium and low capacity vessel weighing applications. The LCS9 is constructed of a nickel-plated high alloy tool steel and fully potted to IP65 to protect from water and moisture damage, also available in stainless steel. When used with our Duramount 3E mounting assembly the LCS9 is the ideal choice for vessel weighing and batching systems.

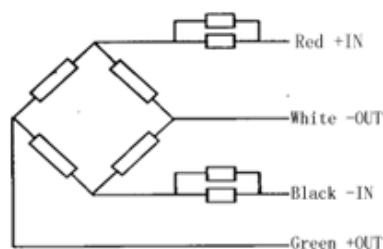


## Specifications:

Combined error	0.02% FS
Rated output	3.0 ± 0.1 mV/V
Nonlinearity	0.02% FS
Hysteresis	0.02% FS
Non-repeatability	0.01% FS
Creep	0.02% FS / 30 min
Input resistance	350 ± 3 Ω
Output resistance	350 ± 3 Ω
Insulation resistance (MΩ)	≥ 5,000 (50 VDC)
Zero balance	1.0% FS
Temp effect on output	0.02% FS/10°C
Temp effect on zero	0.02% FS/10°C
Compensated temp range	-10 to 40°C
Operating temp	-35 to 65°C
Recommended excitation	10 VDC
Safe overload	150% FS
Ultimate overload	200% FS
Cable length	1k - 5k se: 13.1' (4 meters) 5k le - 20k: 19.6' (6 meters)



ELECTRICAL CONNECTION:



## Dimensions:

Capacity (lb)	Dimensions (inches)									
	L	L1	L2	L3	W	W1	H	D	T	
1k - 5k se	5.12	1.00	3.00	0.50	1.34	1.25	1.25	0.53	½-20 UNF	
5k le - 10k	6.75	1.50	3.75	0.75	1.57	1.50	1.50	0.78	¾-16 UNF	
20k	8.75	2.00	4.75	1.00	2.06	2.00	2.00	1.06	1-12 UNF	

Load Cell Central follows a policy of continuous improvement and reserves the right to change specifications without notice. © 2016

**Load Cell Central**  
28175 Route 220  
Milan, PA 18831

Web: [www.800loadcel.com](http://www.800loadcel.com)  
Email: [sales@800loadcel.com](mailto:sales@800loadcel.com)

**Toll Free: 1-800-562-3235**  
Ph: 1-570-731-7048  
Fax: 1-570-731-7054