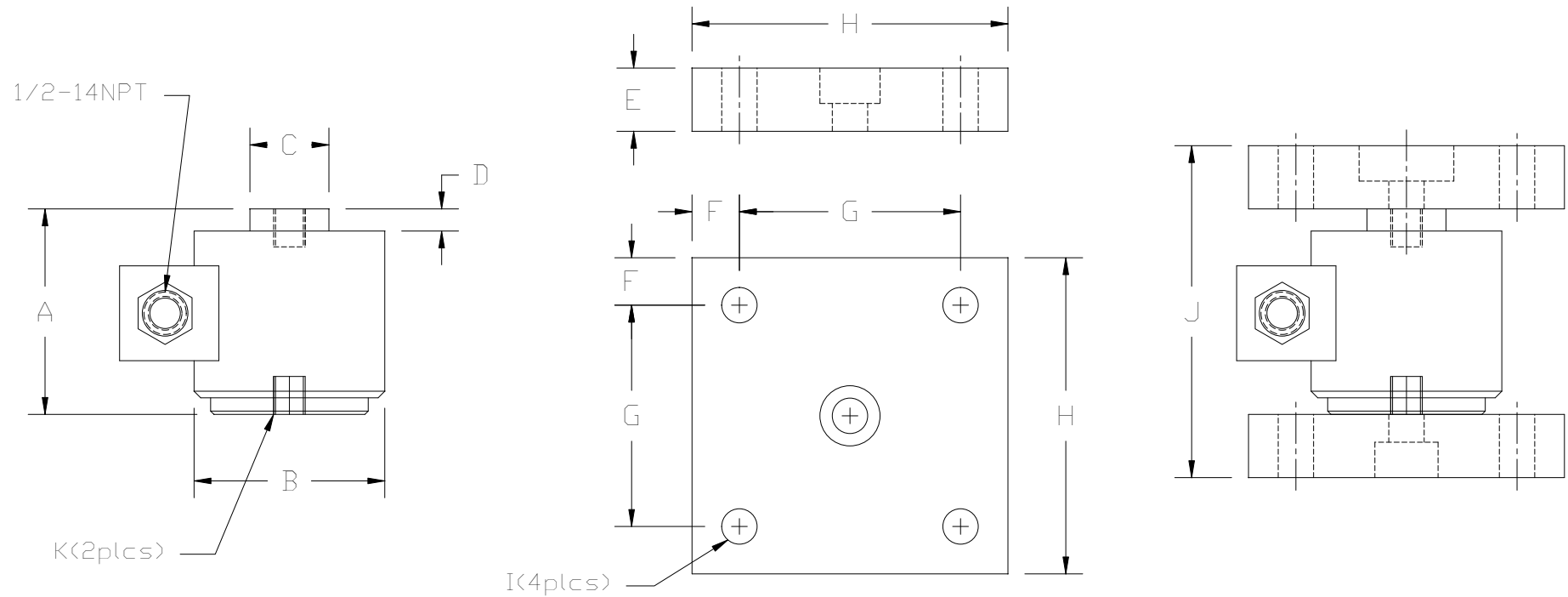


REVISIONS							
ZONE	LTR.	DESCRIPTION	DATE	ECN	BY	CKD	APVD
-	-	INITIAL RELEASE	11/30/06	-	-	-	-



- PERFORMANCE SPECIFICATIONS:
- CAPACITIES: 1K, 2K, 5K, 10K, 20K, 25K, 50K, 100K, 150K, & 200K LB
  - SAFE OVERLOAD: 150% FS
  - FULL SCALE OUTPUT: 2.00 mV/V
  - EXCITATION VOLTAGE: 10-15V AC/DC
  - LOAD CELL RESISTANCE: 350 OHMS
  - LOAD CELL CABLE: 4 CONDUCTOR, 50 FT
  - OPERATING TEMPERATURE RANGE: -20°C - +60°C
  - MATERIAL  
LOAD CELL: STAINLESS STEEL  
ASSEMBLY: STAINLESS STEEL



RATED CAPACITY	DIMENSIONS										
	A	B	C	D	E	F	G	H	I	J	K
1K-50K	3.25	3.00	1.25	0.35	-	-	-	-	-	-	1/2 -20UNF x0.50dp
100K	5.00	4.00	2.31	0.55	-	-	-	-	-	-	1/2 -20UNF x0.50dp
150K-200K	7.25	6.00	3.00	1.10	-	-	-	-	-	-	1/2 -20UNF x0.50dp
1K-5K W/5" PLATES	-	-	-	-	1.00	0.75	3.50	5.00	0.56	5.25	-
10K-50K W/8" PLATES	-	-	-	-	1.00	1.00	6.00	8.00	0.62	5.25	-
100K W/8" PLATES	-	-	-	-	1.00	1.00	6.00	8.00	0.62	7.00	-
150K-200K W/8" PLATES	-	-	-	-	1.00	1.00	6.00	8.00	0.62	9.25	-

\*DO NOT ALTER WITHOUT AGENCY NOTIFICATION\*



MODEL SB9  
TANK MOUNT

Load Cell Central follows a policy of continuous improvement and reserves the right to change specifications without notice. © 2008

<p>THIS DRAWING USES THIRD ANGLE PROJECTION</p>	<p>THIS DOCUMENT CONTAINS PROPRIETARY INFORMATION AND SUCH INFORMATION MAY NOT BE REPRODUCED OR DISCLOSED FOR ANY PURPOSE OR USED TO PRODUCE THE ARTICLE OR SUBJECT WITHOUT WRITTEN PERMISSION FROM LOAD CELL CENTRAL.</p>	<p>TOLERANCES UNLESS OTHERWISE SPECIFIED .XX±.01 .XXX±.005 FRACTIONS ±1/16" ANGLES: ±1/2"</p>	APPROVALS	DATE
			DRAWN: MP	11/30/06
			CHECKED: AA	11/30/06
			ENGINEER: WH	11/30/06
APPROVED: WH	11/30/06	MATERIAL	SEE NOTES	

SCALE	SIZE	PART/DRAWING NO.	REV.
NONE	B	DOD-SB9	-
MODEL SB9		SHEET 1 OF 1	