

Load Cell Central

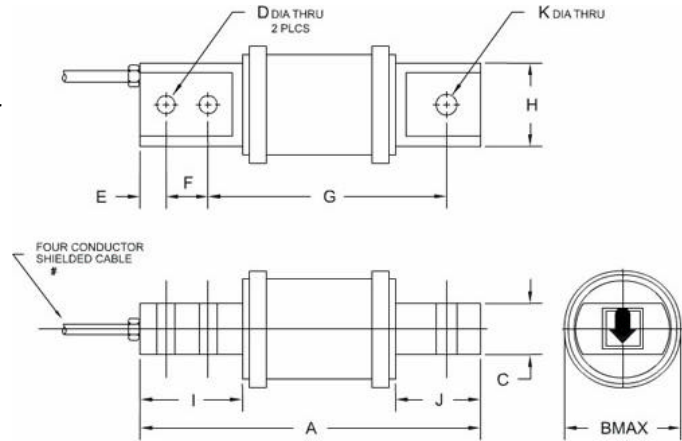
1-800-LOADCEL

Bending Beam Load Cell

Model: SBB1

Ranges from 50 to 10,000 lbs.

The SBB1 load cell is designed for low profile multiple load cell applications such as industrial floor scales, barrel scales, or medium and low capacity vessel weighing applications. This load cell is ideally suited for harsh environments with its redundant sealing of the strain gage area. The gage area is protected with a water resistant potting material covered by a clamped-in-place neoprene boot.



Capacities: 50, 100, 200, 500, 1K, 2.5K, 2.5K, 4K, 5K, 10K lb.

Dimensions:

Capacity (LB)		A	B	C	D	E	F	G	H	I	J	K
50 - 200	(inch)	5.00	1.56	.75	.26	.38	.62	3.50	1.23	1.50	1.25	.39
500 - 1K	(inch)	5.38	1.56	.75	.41	.62	1.00	3.25	1.23	2.07	1.20	.53
2.5K	(inch)	5.38	1.56	.75	.41	.62	1.00	3.25	1.23	2.07	1.20	.53
5K - 10K	(inch)	7.28	2.16	1.38	.66	.75	1.75	4.03	1.70	3.47	1.56	.78

Specifications:

Combined Error:	0.02% FS	Zero Balance:	1.0% FS
Recommended Excitation:	10Vdc	Temp. Effect on Output:	0.0008% FS/deg. F
Non-Linearity:	0.03% FS	Temp. Effect on Zero:	0.0015% FS/deg. F
Hysteresis:	0.02% FS	Compensated Temp.:	0 to 150F
Non-Repeatability:	0.01% FS	Safe Overload:	150% FS
Rated Output:	2.0 mV/V +/- 0.1% (2.5% for 50 & 100 lbs.)	Input Resistance:	350 Ohms +/- 1%
		Output Resistance:	350 Ohms +/- 1%

Load Cell Central follows a policy of continuous improvement and reserves the right to change specifications without notice. © 2008

Load Cell Central
216 Main St. / PO Box 91
Monroeton, PA 18832
Web: www.800loadcel.com

Toll Free: 1-800-562-3235
Ph: 1-570-265-5015
Fax: 1-570-265-5148
Email: sales@800loadcel.com