

Load Cell Central

1-800-LOADCEL

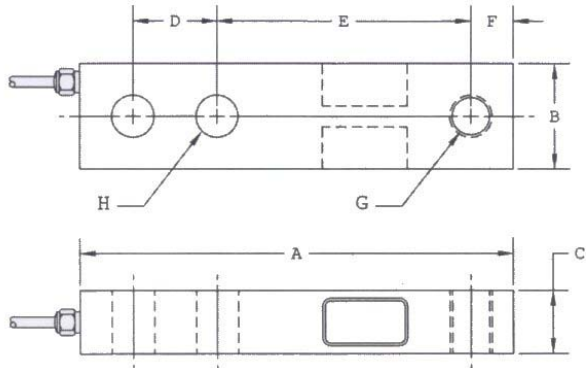
Low Profile Single Ended Shear Beam Load Cell

Model: SBLP

Ranges from 1,000 to 4,000 lbs.

The SBLP load cell is designed for low profile multiple load cell applications such as industrial floor scales, barrel scales, or medium and low capacity vessel weighing applications. The SBLP is constructed of stainless steel and fully potted to IP67 to protect from water and moisture damage.

Capacities: 1K, 2.5K, 4K lb.



Cable Color Code:

Green : +Excitation
 Black : -Excitation
 White : +Signal
 Red : -Signal

Capacity		A	B	C	D	E	F	G	H
1K, 2.5K, 4K lb	(inch)	5.12	1.22	0.75	1.00	3.00	0.50	1/2-20NF	0.516

Specifications:

Rated Output:	3 mV/V Nominal	Compensated Temp.:	-10 to 40°C
Combined Error:	0.03% FS	Recommended Excitation:	10Vdc
Non-Repeatability:	0.02% FS	Maximum Excitation:	15Vdc
Input Resistance:	350 Nominal	Safe Overload:	150% FS
Output Resistance:	350 Nominal	Cable Length:	20'

Load Cell Central follows a policy of continuous improvement and reserves the right to change specifications without notice. © 2008

Load Cell Central
 216 Main St. / PO Box 91
 Monroeton, PA 18832
 Web: www.800loadcel.com

Toll Free: 1-800-562-3235
 Ph: 1-570-265-5015
 Fax: 1-570-265-5148
 Email: sales@800loadcel.com