

Load Cell Central

1-800-LOADCEL

Model: SFLC

Scale Foot Load Cell

Capacities: 1K, 2.5K lbs

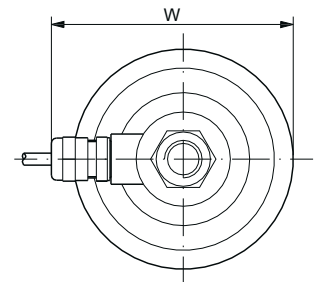
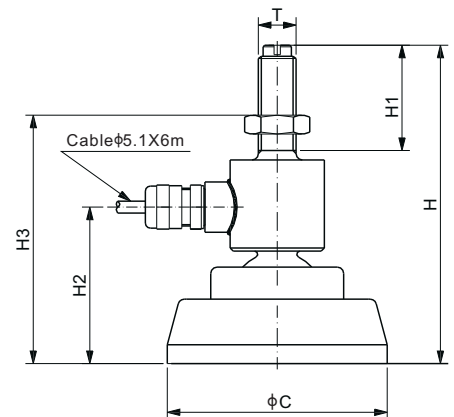
The SFLC scale foot load cell is designed to replace machinery feet and for converting objects such as tables, platforms, hoppers, and conveyors into electronic scales. The rubber foot provides vibration dampening and slip resistance. Made of alloy steel, the load cell is sealed to IP66 making it suitable for most industrial environments.

Specifications:

Rated Output	2.0 ± 0.25% mV/V
Nonlinearity	0.2% FS
Hysteresis	0.2% FS
Non-repeatability	0.03% FS
Creep	0.03% FS/30 min
Input resistance	380 ± 20 Ω
Output resistance	350 ± 3 Ω
Insulation resistance	> 2,000 MΩ (50 VDC)
Zero balance	1% FS
Temperature effect on output	0.014% FS/10 °C
Temperature effect on zero	0.017% FS/10 °C
Compensated temperature	-10 to 50 °C
Operating temperature	-35 to 65 °C
Recommended excitation	10 VDC
Safe overload	150% FS
Ultimate overload	300% FS
Cable length	6 meters
Protection class	IP66

Dimensions:

Capacity (lbs)	Dimensions (inches)						
	C	H	H1	H2	H3	W	T
1K – 2.5K	2.76	3.99	1.32	1.96	2.91 – 3.82	3.03	½" -20 UNF



Load Cell Central
28175 Rte. 220
Milan, PA 18831

Web: www.800loadcel.com
Email: sales@800loadcel.com

Toll Free: 1-800-562-3235
Phone: 1-570-731-7048
Fax: 1-570-731-7054