

## STLC Bow Type Crosby™ Cabled Load Shackle



### Features

- Ranges from 1 tonne to 400 tonne
- High tensile carbon steel construction
- Environmentally sealed to IP67
- Simple installation and operation
- Shackle and load pin fully certified
- Optional load centralising bobbin
- Can be supplied with amplified output
- Many other options available

### Typical Applications

- Under-hook hoist/crane weighing
- Cable tension monitoring
- Towing/mooring Tension
- Crane safe load monitoring

### Description

The Load Cell Central range of load shackles are designed for lifting and weighing in harsh environments. The load cell shackle pins are forged from high tensile stainless steel and are machined to an exacting specification. The basic shackle uses the Crosby G2130 (1 to 25te) and G2140 (40 to 400te) series.

This range of load cells are proof loaded to 150% of the normal rated load, and is available in a range from 1 tonne to 400 tonne. The integral cable is normally enclosed in an armoured rubber hydraulic hose to give physical and environmental protection. The STLC is internally gauged and the whole instrumented area is sealed to IP67 to protect it in service.


The STLC is simple to install and are available in standard shackle sizes. As an option, a rotating bobbin can be supplied to centralise the load and to minimise any point-load effects when the shackle is placed under load. We are also always happy to discuss any special requirements that you may have.

The STLC series can be supplied on its own or combined with our extensive range of instrumentation to provide a complete load monitoring package.

### Specification

Rated load (tonnes)	1, 2, 3.25, 4.75, 6.5, 9.5, 12, 17, 25, 40, 55, 85, 120, 150, 200, 300, 400
Proof load	150% of rated load
Ultimate breaking load	300% of rated load
Output	Between 1.8mV and 3.6mV
Non-linearity	<±1% of rated load (typically)
Non-repeatability	<±0.1% of rated load
Excitation voltage	10vdc recommended, 15vdc maximum
Bridge resistance	350Ω
Insulation resistance	>500MΩ @ 500vdc
Operating temperature range	-20 to +70°C
Compensated temperature range	-10 to +50°C
Zero temperature coefficient	<±0.01% of rated load/°C
Span temperature coefficient	<±0.01% of rated load/°C
Environmental protection level	IP67
Connection type	10 metre 4 core screened PUR cable (glanded exit)
Wiring connections	+ supply: Red                      - supply: Blue + signal: Green                    - signal: Yellow

### Available Options

- Custom ranges and capacities up to 2000te
- Special electrical connections
- Integral signal conditioning
- Centralising load bobbin
- Subsea and offshore versions
- TEDS option (when used with AHM handheld display)
- ATEX version available 

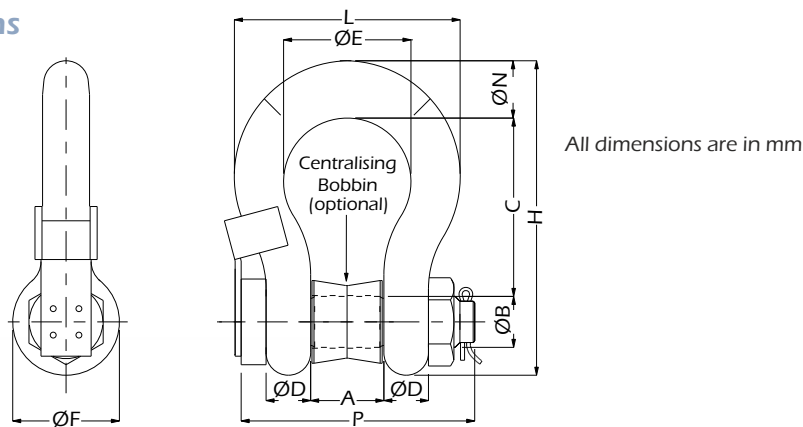
## STLC Bow Type Crosby™ Cabled Load Shackle

### Special Options

Special ranges	The STLC can be supplied in any range, between 1te and 400te and calibrated as required. Usually we will choose the nearest standard shackle size. We can also offer special design shackles up to 2000te. Contact Load Cell Central for more details
Special electrical	The standard STLC cable exits the shackle pin via a gland and is restrained using the anti-rotation bracket. We can offer variations to the electrical connection method. For example, integral connectors, special cable length etc. For more details contact our sales department.
Integral signal conditioning	We can offer various integral signal conditioning options: <b>Analog Signals</b> 4-20mA 2-wire current output (7.5 to 30vdc supply) 4-20mA 3-wire current output (10 to 30vdc supply) 0-5vdc 3-wire voltage output (8.5 to 28vdc supply) 0-10vdc 3-wire voltage output (13 to 30vdc supply) <b>Digital Signals</b> RS232 digital - various protocols (5.4 to 18vdc supply) RS485 digital - various protocols (5.4 to 18vdc supply)
Centralising bobbin	We can offer an optional centralising bobbin. This helps improve the overall accuracy in certain cable tension applications. The bobbin is shown pictorially in the drawing below.
Subsea or offshore	We are able to offer fully submersible versions, which are normally supplied with underwater mateable connectors. These versions can also be pressure tested by LCC and witnessed by a third party at any point through the manufacturing process. We regularly have ABS, Lloyds or DNV inspectors on site.
Radio telemetry	We have a version available that requires no cable connection, using radio telemetry to transmit data. There is a separate data sheet available for this product ( <b>WL-STLC</b> ).



### Dimensions



Rating (tonnes)	A	ØB	C	ØD	ØE	ØF	H	L	ØN	P	Weight (kgs)
1	16.8	11.2	36.6	9.65	26.2	23.1	63	44.2	9.65	90	2
2	20.6	16	47.8	12.7	33.3	30.2	83.5	58.5	12.7	97	2.3
3.25	26.9	19.1	60.5	16	42.9	38.1	106	74.5	17.5	96	2.8
4.75	31.8	22.4	71.5	19.1	51	46	126	89	20.6	111	3
6.5	36.6	25.4	84	22.4	58	53	148	102	24.6	122	3.2
9.5	46	31.8	108	28.7	74	68.5	190	131	31.8	156	5.2
12	51.5	35.1	119	31.8	82.5	76	210	146	35.1	171	8
17	60.5	41.4	146	38.1	98.5	92	254	175	41.1	201	12
25	73	51	178	44.5	127	106	313	225	57	236	18
40	73	50.8	178	44.5	127	106	313	225	57	236	18
55	82.5	57.2	197	50.8	146	122	347	258	61	269	25
85	105	69.9	267	66.5	184	148	455	324	79.2	351	45
120	127	82.5	330	76	200	165	546	365	92	387	85
150	133	95.5	372	95.5	229	203	625	419	105	448	125
200	184	121	397	95.5	279	267	743	533	152	580	215
300	213	152	495	121	330	305	895	635	172	610	364
400	255	175	650	165	325	350	1078	655	165	700	520

www.800loadcel.com

Issue No. 2

Issue date: 15/01/2015

APPROVED

(unapproved if printed)

Load Cell Central follows a policy of continuous improvement and reserves the right to change specifications without notice. © 2016

Load Cell Central  
28175 Route 220  
Milan, PA 18831

Web: [www.800loadcel.com](http://www.800loadcel.com)  
Email: [sales@800loadcel.com](mailto:sales@800loadcel.com)

Toll Free: 1-800-562-3235  
Ph: 1-570-731-7048  
Fax: 1-570-731-7054