

Load Cell Central

1-800-LOADCEL

DURAMOUNT 18

USED WITH **LCC-XLS** LOAD CELLS

AND MOST STANDARD "S" TYPE
AND TENSION CANISTER LOAD CELLS



FEATURES:

- Capacities 50 lbs. - 10K Ibs.
- Adapts threaded rod to S Cell & tension canisters
- Rod end ball joints
- Teflon electrical isolation
- Bonding ground strap
- Tension loading
- Zinc plated or FDA approved epoxy painted alloy steel
- Stainless Steel available

DESCRIPTION:

The **DURAMOUNT 18**, combined with the **XLS** family of load cells, provides a wide range, 50,100, 200, 300, 500, 750, 1K, 1.5K, 2K, 3K, 5K, and 10K pound tension weighing assemblies suitable for scale conversions, process control, hopper and tank batch weighing. Teflon insulation, combined with a bonding strap, protects the load cell from stray ground currents and electrostatic charges.

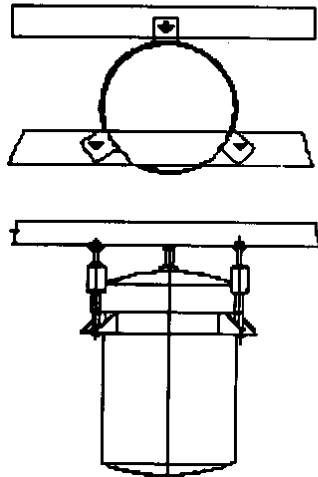
Tension loading design assures correct load alignment and is ideal for low to medium capacity hopper and tank weighing.

The **DURAMOUNT 18** can be used with the following load cells: 42HT, 43HT, 62HT, 263D, 182T, USP, UMP, BSP, 363, 9363, **LCC-XLS** and many others.

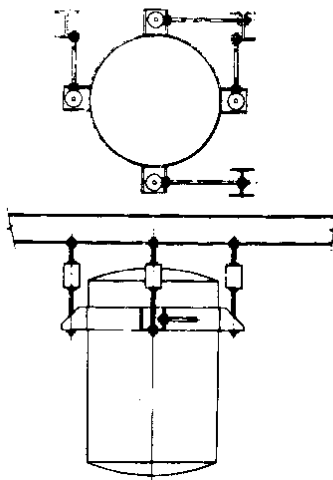
Select the Thread size "D" to match the thread size shown on the load cell data sheet. Overall assembly length dimension "A" is based on the **XLS** and will change according to the cell used.

APPLICATIONS:

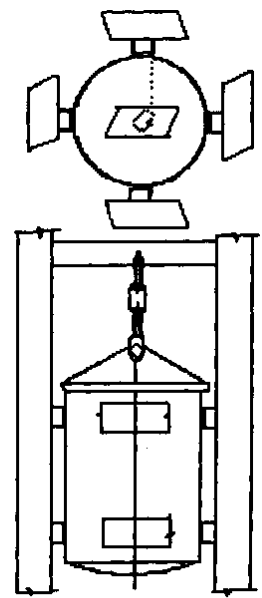
- Low to medium capacity
- Scale conversions
- Tank weighing
- Process control
- Chemical plants
- Process weighing
- Hopper weighing
- Batch weighing
- Food processing



THREE TENSION LOAD CELL ASSEMBLIES



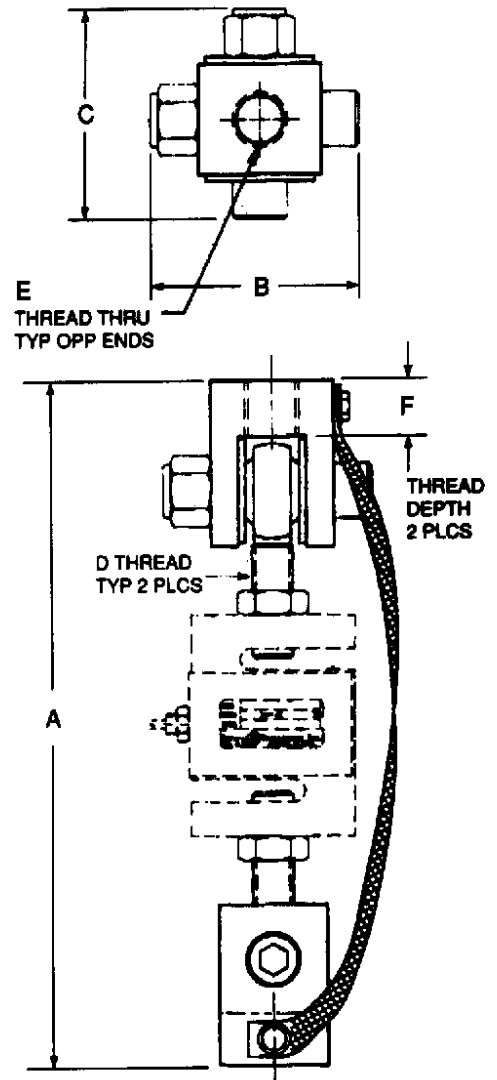
FOUR TENSION LOAD CELL ASSEMBLIES



ONE TENSION LOAD CELL ASSEMBLY

Tanks and hoppers should have the suspension hardware attached above or at the load center of gravity, providing inherent stability, and reducing the need for restraints. Horizontal check rods or bumpers should be used to prevent swaying. The suspended assembly must be self-centering to prevent alternate load paths caused by check rods or rubbing against bumpers. Suspension using a single load cell requires the use of one or more swivels or check rods to prevent errors produced by torque on the load cell. Vertical safety rods or chains must be used to prevent damage in the case of overload failure.

OUTLINE DRAWING:



DURAMOUNT 18 DIMENSIONS - inches/(mm)

CAPACITY lbs.	A	B	C	D	E	F	MOUNT WEIGHT
50, 100, 200 300	7.25 (184)	2.37 (60.2)	2.37 (60.2)	1/4-28 UNF	1/2-13 UNC	.75	3 lbs. 1.4 kg.
500, 750, 1K 1.5K, 2K	10.5 (267)	3.25 (82.5)	3.25 (82.5)	1/2-20 UNF	3/4-10 UNC	.1.00	7 lbs. 3.2 kg.
3K	11.6 (294)	3.25 (82.5)	3.25 (82.5)	1/2-20 UNF	3/4-10 UNC	.1.00	7 lbs. 3.2 kg.
5K, 10K	12.6 (320)	3.62 (91.9)	3.62 (91.9)	3/4-16 UNF	1-8 UNC	.1.00	8 lbs. 3.6 kg.

