

Load Cell Central

1-800-LOADCEL

Model: Duramount 3E

Cost-Effective Weighing Assembly

The Duramount 3E is one of the most cost-effective weighing assemblies available and comes in capacities of 500, 1K, 2K, 2.5K, 3K, 4K, 5Kse, 5Kle, and 10K. It is designed for all low-profile medium capacity applications. The unique center pivoted, tension-loading design tolerates platform movement in all directions and is self-restoring to its center position. Check rods are unnecessary for static loads. If major load movement is anticipated, platform or vessel bumpers may be required. Platform leveling and adjustment can be done easily. The Duramount 3E's simplified design allows it to be bolted directly to the platform and floor without extra plates, buttons, and other mounting devices normally required.



Features:

- Capacity of 500 to 10K lb
- Epoxy paint
- Two axes of freedom
- Easy height adjustment
- Optional stainless steel construction
- Non-rigid

Applications:

- Light to heavy capacity
- Food processing
- Batching
- Process weighing
- Tank weighing
- Platform scales
- Harsh environment
- Conveyor
- Chemical plants
- Filling machines

Load Cell Central
28175 Rte. 220
Milan, PA 18831

Web: www.800loadcel.com
Email: sales@800loadcel.com

Toll Free: 1-800-562-3235
Phone: 1-570-731-7048
Fax: 1-570-731-7054

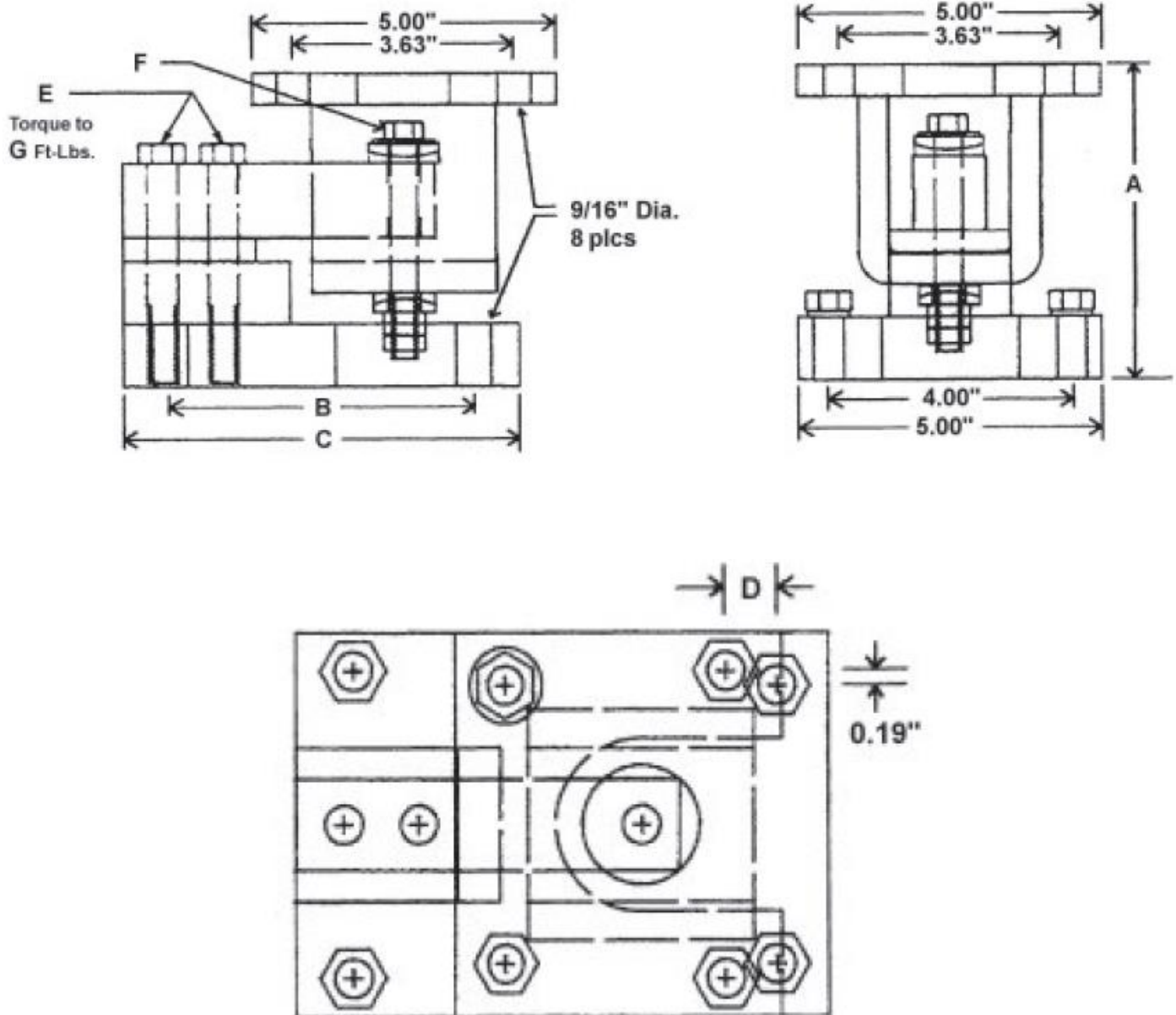
Dimensions:

Capacity	A	B	C	D	E	F	G
500** thru 5K se	5.0	5.0	6.5	0.69	½ - 20 x 3.5"	7/16 - 20 x 3.5"	90
5 Kle / 10K	5.3	6.5	8.0	0.55	¾ - 16 x 4.0"	5/8 - 18 x 4.0"	250

* Adjustable ± .25"

** When used with load cell model LCS1-S2-500 lb

Note: All bolts are grade 5



Load Cell Central
28175 Rte. 220
Milan, PA 18831

Web: www.800loadcel.com
Email: sales@800loadcel.com

Toll Free: 1-800-562-3235
Phone: 1-570-731-7048
Fax: 1-570-731-7054